

## Update Instructions SimaPro 8.0.2 to SimaPro 8.0.3





## Colophon

Title : Update Instructions SimaPro 8.0.2 to SimaPro 8.0.3

Written by: PRé  
Tommie Ponsioen, Michiel Oele, Jorrit Leijting

Report version: 1  
Date: May 2014  
Language: English  
Availability: PDF file

Copyright: © 2014 PRé. All rights reserved.  
PRé grants the right to distribute and print the unchanged PDF version of this manual for non commercial purposes only.  
  
Parts of the manual may be reproduced in other work only after permission and if a clear reference is made that PRé is the author.

Support:  
Phone: +31 33 4504010  
Fax: +31 33 4555024  
E-mail: [support@pre-sustainability.com](mailto:support@pre-sustainability.com)  
Website: [www.pre-sustainability.com](http://www.pre-sustainability.com)

## Contents

<b>1</b>	<b>INTRODUCTION .....</b>	<b>3</b>
<b>2</b>	<b>UPDATING THE SIMAPRO SOFTWARE .....</b>	<b>3</b>
2.1	MULTI-USER VERSIONS .....	3
2.2	PROCEDURE FOR SINGLE USER AND MULTI-USER CLIENT .....	3
<b>3</b>	<b>UPDATING THE DATABASE .....</b>	<b>3</b>
3.1	DATABASE UPDATE .....	3
3.2	OUTLINE OF THE INSTRUCTIONS .....	4
3.3	INSTALLATION OF THE UPDATE DATABASE .....	4
3.4	IMPORT OF THE UPDATE DATABASE .....	4
3.5	DATABASE IMPORT .....	7
3.6	IMPORT ERRORS .....	7
3.7	APPEND SUBSTANCES .....	7
	<b>ANNEX 1: EXPLANATION OF DIFFERENT ERROR MESSAGES .....</b>	<b>8</b>

# 1 Introduction

This document describes how to update your current SimaPro 8.0.2 or 8.0.3.

You will find detailed instructions below. Please read these carefully. Should you still have questions, please contact your local [SimaPro partner](#) or the PRé helpdesk via [support@pre-sustainability.com](mailto:support@pre-sustainability.com) or by phone +31 33 4504010.

The update procedure can be summarized as follows:

1. Update of the SimaPro 8 software: Update your SimaPro 8 Single User and Multi-user client software to SimaPro 8.0.2
2. Update of the libraries in the SimaPro database: Add the new Agri-footprint library and update your ELCD data libraries and the “Methods” library by importing the update database.

## 2 Updating the SimaPro Software

### 2.1 Multi-user versions

We recommend that multi-user updates are done by your network administrator.

- All SimaPro 8 multi-user clients have to be updated.
- The database server can be kept running.

### 2.2 Procedure for Single User and Multi-user client

This procedure describes the software update for the SimaPro single user and multi-user client. The SimaPro database server does not need to be updated.

1. Download the SimaPro installation file SetupSimaPro803.zip from <http://www.pre-sustainability.com/simapro-installation>.
2. Unzip and double click SetupSimaPro803.exe to start the installation. Follow the instructions in the setup wizard. The current SimaPro 8.0.2 software will be removed and be replaced with SimaPro 8.0.3 software. Note that in this process, no changes to your database are made. You may be asked for your registration name and code. If so, please enter the last registration code with validity from- November 1, 2013 or later.
3. After installing the update, you can start SimaPro. Now you can proceed with the database update as described below.

## 3 Updating the Database

### 3.1 Database update

This section describes how to update your database by importing the update database. In Box 1 you can find tips for updating if you have a multi-user license.

## Box 1. Multi-user versions

If you have a professional Compact, Analyst or Developer Multi user version, updating the database will be quicker if you do the update locally on your own PC. Make sure no users are logged in, close SimaPro and then copy the database (77 numbered \*.nx1 files: from \*\*\*00.nx1 to \*\*\*76.nx1) to your local hard drive. See Box 2 for default locations. In the “Open SimaPro Database” window, choose “Local server”, browse to the database location and follow the instructions below. After updating, copy the database back to the original location.

Owners of an educational Classroom licence do not have “local server” database access, but can request a temporary single user licence via [support@pre-sustainability.com](mailto:support@pre-sustainability.com) to do the update locally.

## Box 2. Default directories

SimaPro stores updates and backups in the default database directory if no other direction is chosen. The default directory depends on the Windows version:

- Windows Vista, Windows 7, Windows 8, 2008 server: C:\Users\Public\Documents\SimaPro\Database\
- Windows 2003 server: C:\Documents and Settings\All Users\Shared Documents\SimaPro\Database

## 3.2 Outline of the instructions

The update process is a sequence of three actions, described in detail further on in this document:

1. You first install an update database that contains the new data.
2. Then you import this database into your SimaPro database(s).
3. Finally, after finishing the import, you run an Append action (in the Substances screen) to merge synonyms in the substance list.

## 3.3 Installation of the update database

After unzipping the SetupSimaPro803.zip, double click SetupUpdateDatabase803.exe to start the installation of the update database. Follow the instructions in the setup wizard. This will install the update database 8.0.3 on your computer, but it will not update your own database.

The “Update803” database is installed in the default directory (see Box 2).

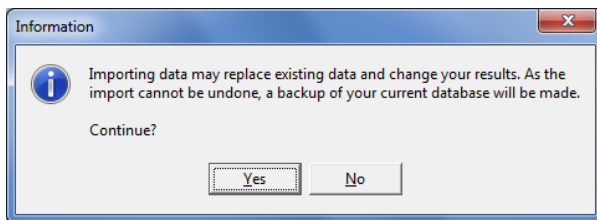
*Multi-user version:* as we recommend updating the database locally, the update database does not have to be installed in one of the locations (directory aliases) defined in the SimaPro database server. You can install on a local hard drive (see Box 1).

If you see the outdated Update800, Update801 or Update802 files, you can delete these with Explorer to avoid confusion and save disk space.

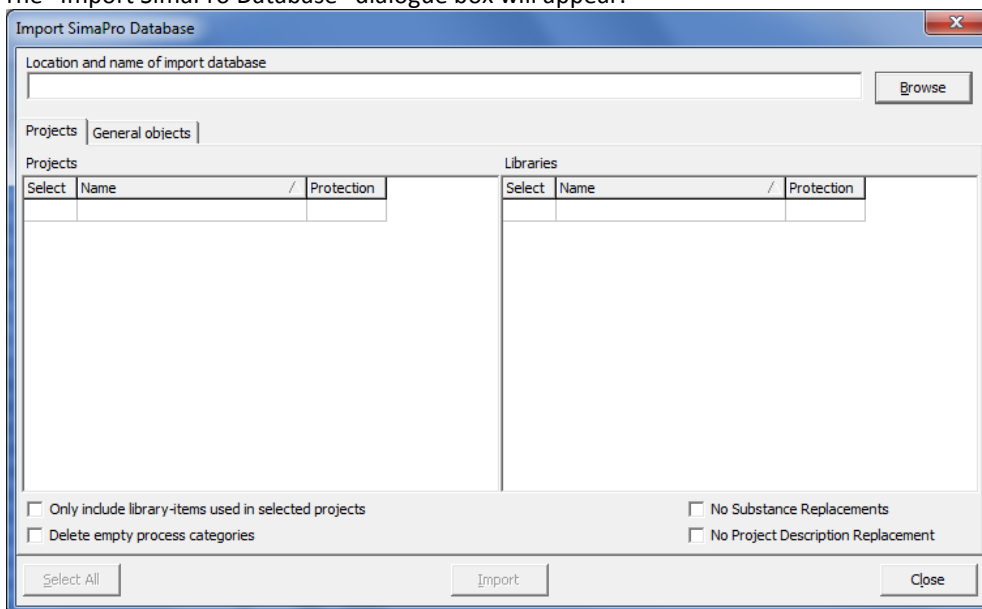
## 3.4 Import of the update database

To finalize the update of your SimaPro database(s), follow these steps to import the new data:

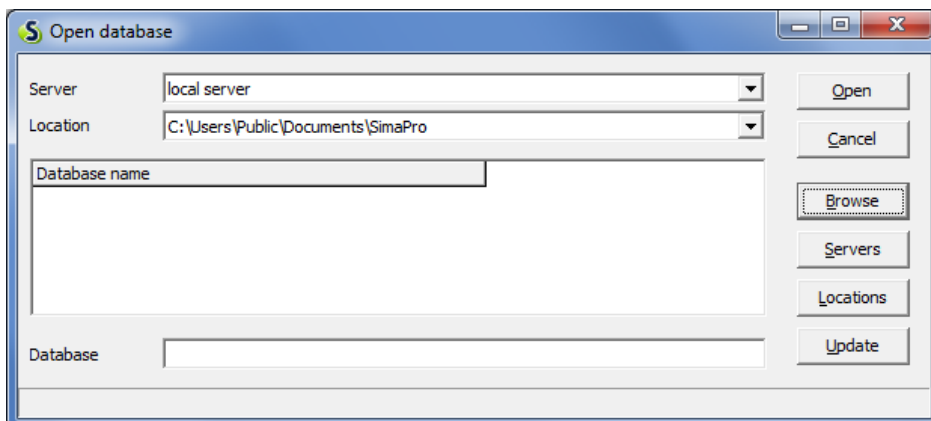
1. Single user version: Start SimaPro.  
SimaPro Multi-user version: Start SimaPro and login as Manager. Make sure no other users are logged in at this moment, as the database will be locked during import
2. Check if the database is opened that you want to update. If not, go to File> Open SimaPro Database and select the database you want to update (the database you usually work in).
3. Go to File > Import SimaPro Database. Click Yes to continue when the message below appears:



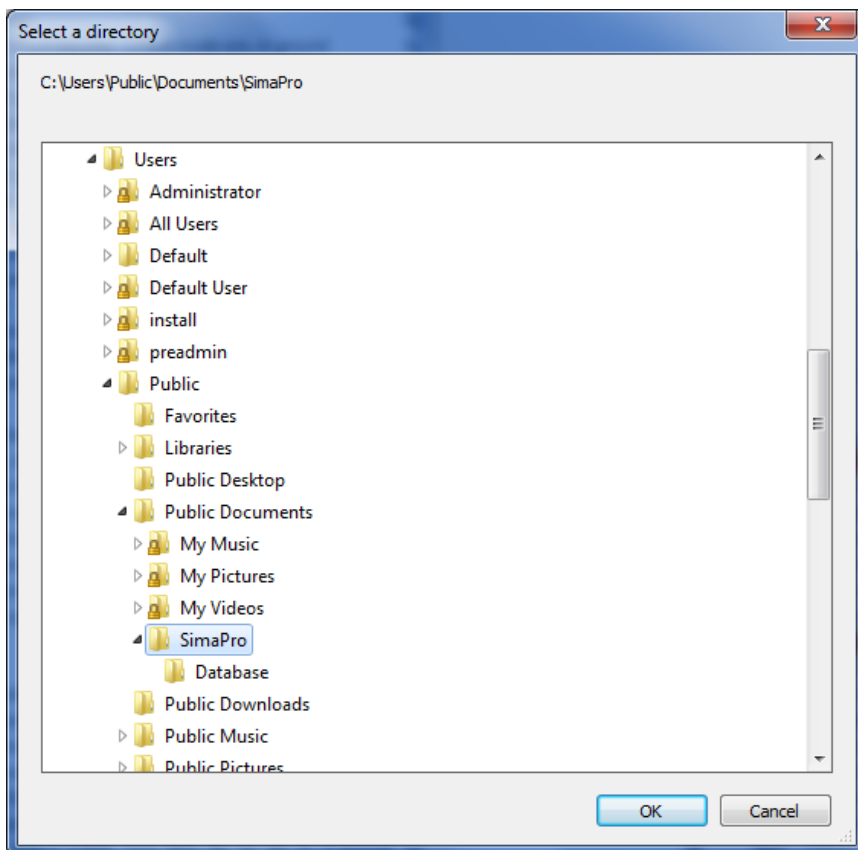
4. The "Import SimaPro Database" dialogue box will appear:



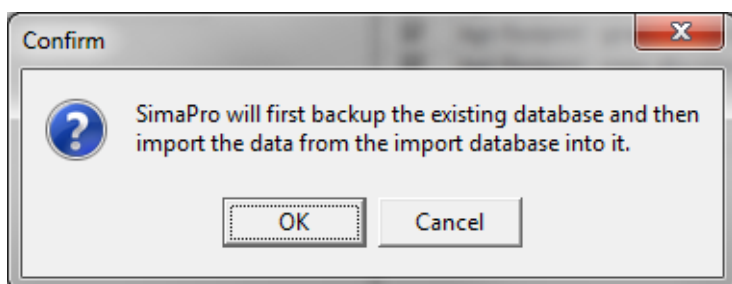
5. Click Browse. The "Open database" dialogue box will appear (local server is shown in Multi user versions only):



- Click the Browse button. Browse to the directory where you have installed the update database and select the "Update802" database (see Box 2 for the default directory) and click OK.



- The update database (Update803) will appear in the open database dialogue box. Click Open. Click the "Select all" button in the bottom left of the window. Click on the Import button.
- The data are scanned and an overview is generated of all the data that are added or replaced. We recommend that you save this overview. Remember that any changes you made in the libraries (e.g. ecoinvent) or in the original methods will be lost when the data are replaced. Data sheets you added will still be there.
- Click OK to start the import process. SimaPro asks you to verify the replacement of each process when updating existing libraries. Click on the "Yes to all" button to accept all replacements.
- After that, a back up has to be made.

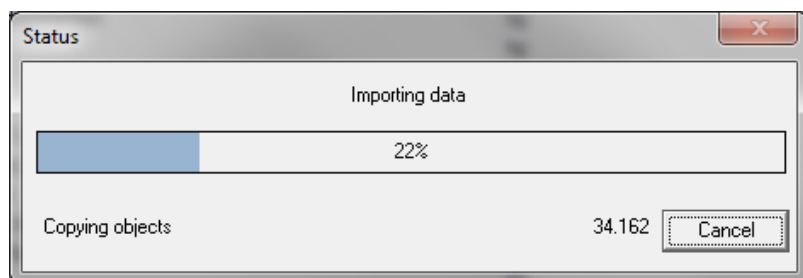




After clicking OK, you need to select a folder (for example the default directory; see Box 2) and enter a file name for your backup file. Note: If you click Cancel, the update will be cancelled.

### 3.5 Database import

The data in the update database is imported into the current database.



After importing the update database, you must now continue with the last step: the Append action.

### 3.6 Import errors

Should SimaPro report any import errors, please save the log file. Check the overview of potential errors in the log file to find out what went wrong. If you need assistance, please contact the SimaPro helpdesk via [support@pre-sustainability.com](mailto:support@pre-sustainability.com) and include the log file as attachment.

### 3.7 Append Substances

Finally, you need to do an “append substances” action to convert substance names in your projects to the new naming convention in SimaPro. If you do not do this, mismatches between life cycle inventory and impact assessment data may occur, leading to incorrect LCA results.

1. Go to the “Substances” section under “General Data” in the LCA Explorer screen.
2. Click “Append”. A new window will open.
3. Click “Load” on the right hand side and select the append file: “AppendSubstances803.xls”. The append file is found in the SimaPro database directory (Box 2).
4. The message “\* out of \* lines are skipped. Do you want to see the errors and warnings?” refers to non matching substance names in the Append list. These substances are mostly not relevant as they have been appended in the past. If you are not interested in this list, click No.
5. Click the Append button on the right hand side of the window. After final confirmation, the substances will be appended. Depending on the size of your database this may take some time.
6. After finishing the append action, you may want to create a backup of the fully updated database via File > Database Management > Backup/Restore > Backup.

## ANNEX 1: Explanation of different error messages

### 1. Internal error

General error message used for all unexpected exceptions that could be raised.

### 2. Error with import database

General error message used for all unexpected errors related to the import database.

### 3. Error with current database

General error message used for all unexpected errors related to the current database.

### 4. Import error raised

Part of the update and transfer operation is the standard import operation in which the data in the import database is copied to the current database. During this operation errors could be generated and these errors are listed individually. The column "Additional info" contains the description of the original import error and the column "Location" contains the location at which the error occurred.

### 5. Duplicate parameters found

As with error "Import error raised" this error could be generated when copying the data from the import database to the current database. This error means there are one or more conflicts between existing parameters and parameters that should be copied from the import database.

In case you import the data from the import database with the standard import function an extensive overview of these conflicts is shown.

### 6. SimaPro needs more free disk space to store temporary files

As with error "Import error raised" this error could be generated when copying the data from the import database to the current database. This error means there is not enough free disk space to store temporary files. Please free more disk space on the specified drive and try again.