

# Guiding decarbonization efforts with integrated sustainability metrics

4<sup>th</sup> of July 2024 | Session 13 – Climate Change

Reinier Martijn Zwiep, Product Management & Marketing Team Lead at PRé

SímaPro



# Rising demand for environmental data



Intrinsic motivation to reduce footprints



Changing customer preferences



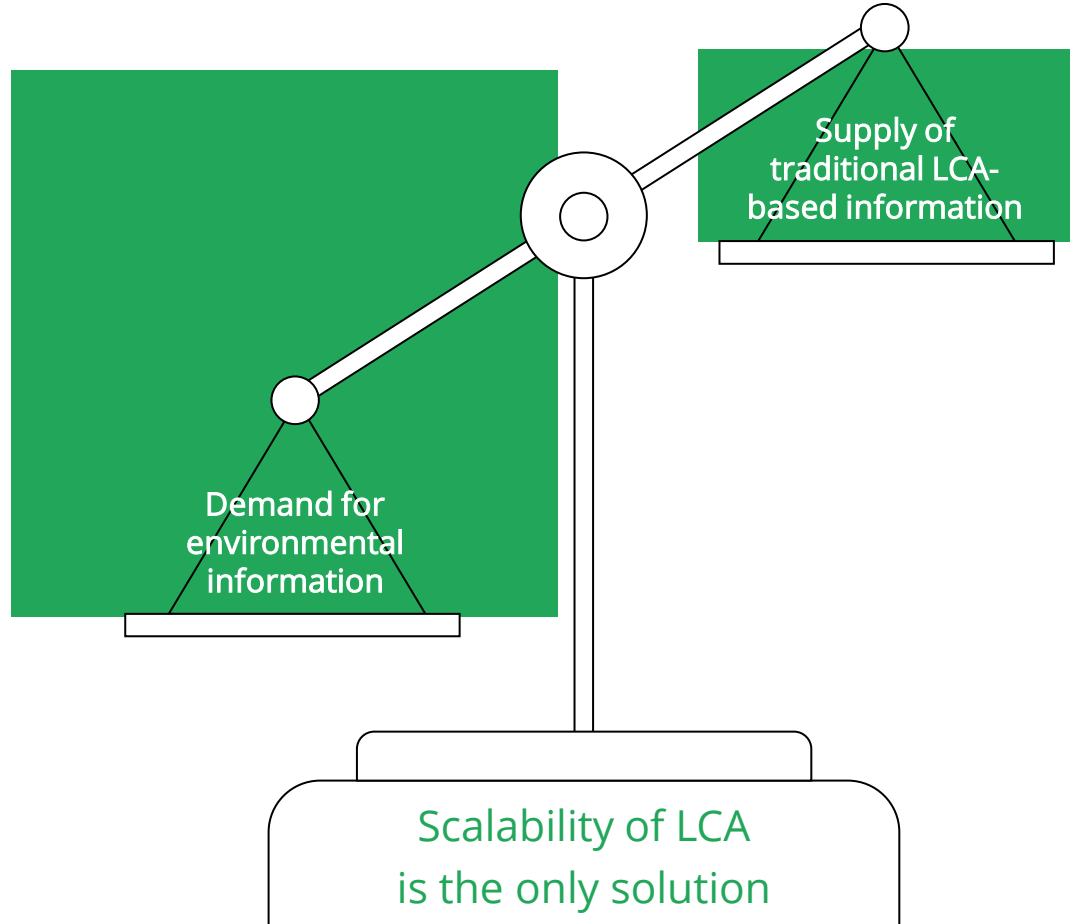
Pressure from retailers, supply chain partners, investors



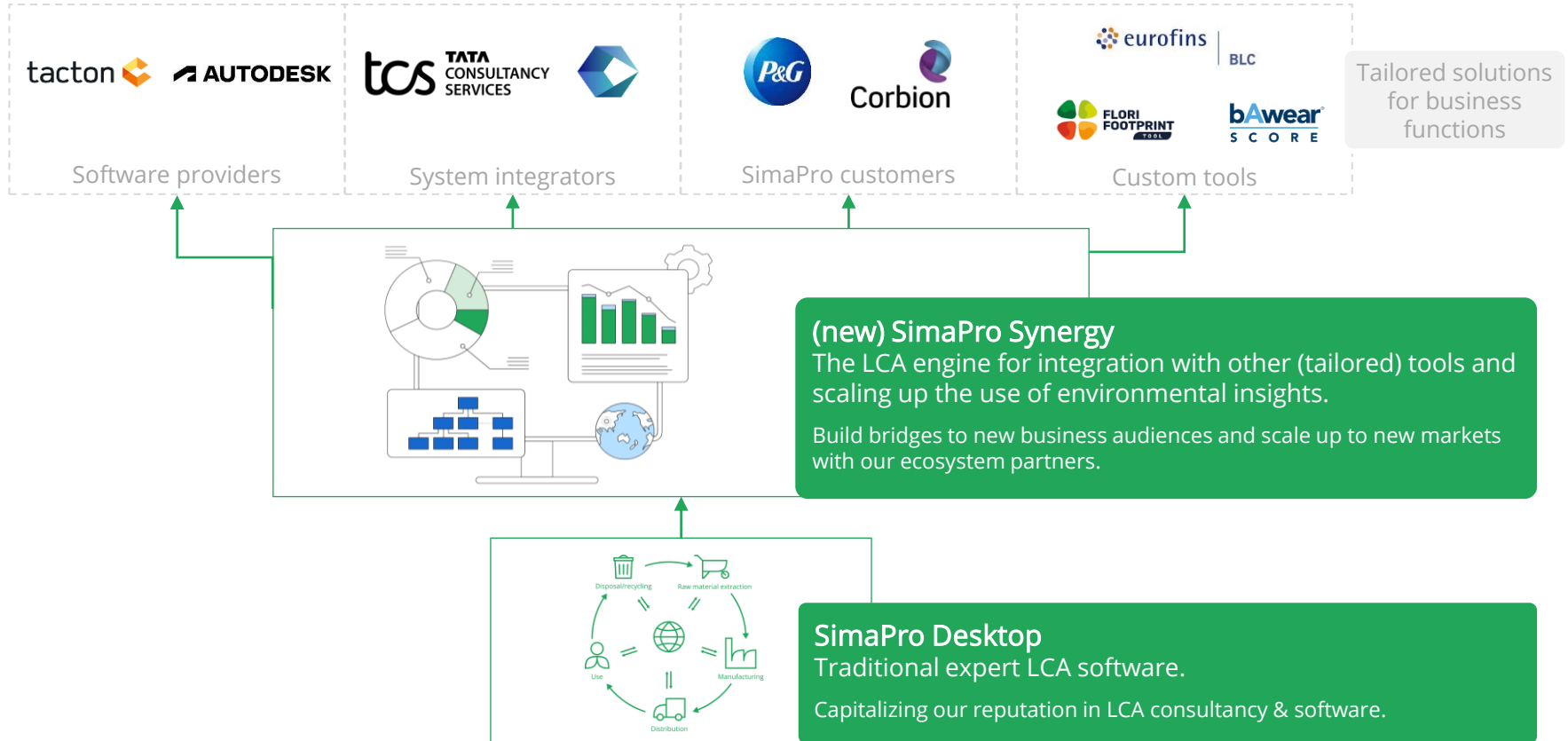
New local and international regulations to comply with



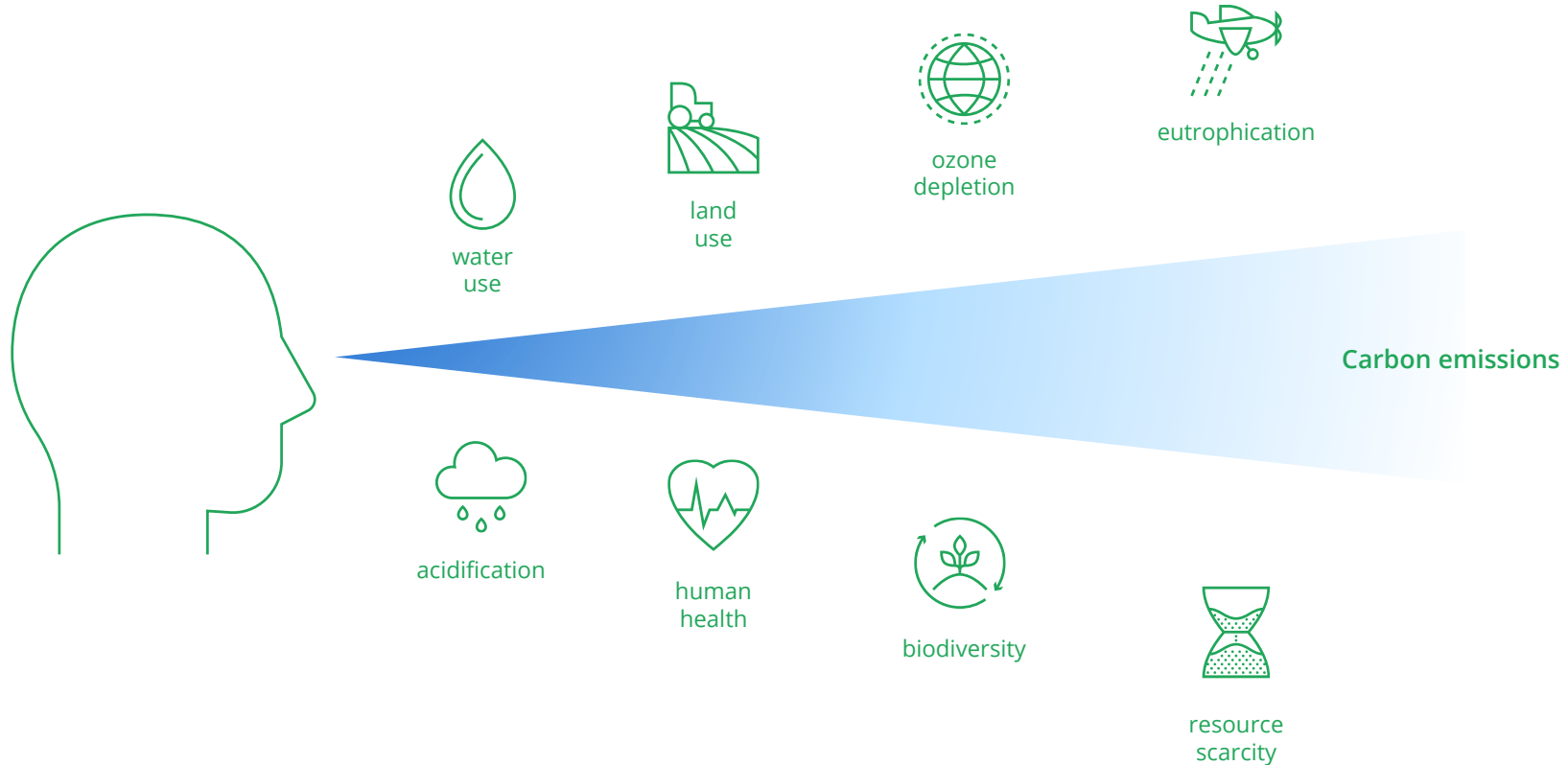
# We must act on a larger scale to meet this demand



# Integrate sustainability into decision-making



# Sustainability goes beyond carbon emissions



# Flexible, scalable and transparent LCA to guide decarbonization efforts



## Flexible

Seamless integration with different software or systems. You get full control over which data is used as input and what the output looks like.



## Scalable

Automate LCA to cover entire product portfolios and move from one-off product LCAs to comprehensive portfolio assessments efficiently.



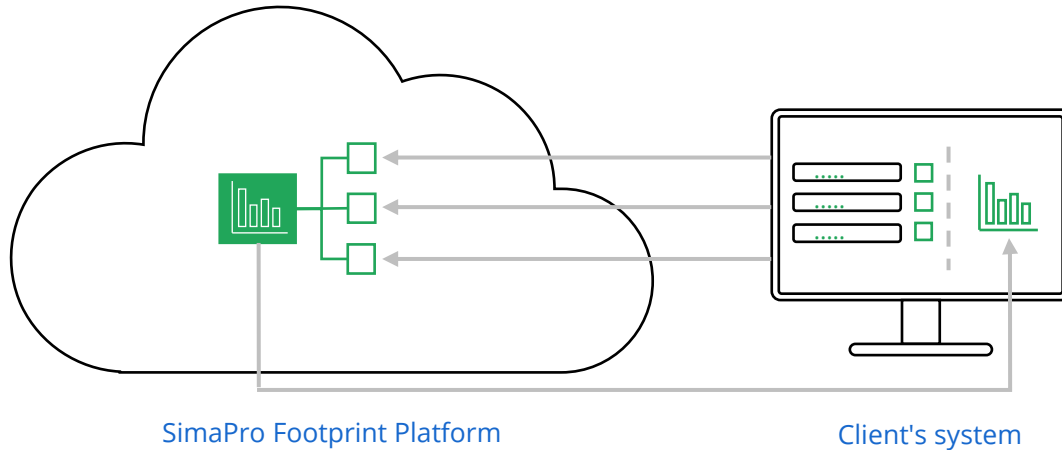
## Transparent

Understand what affects a product's environmental impact with clear calculation breakdowns, and easily identify improvement opportunities.

# Flexibility in system integrations for input data



The LCA model as a starting point.

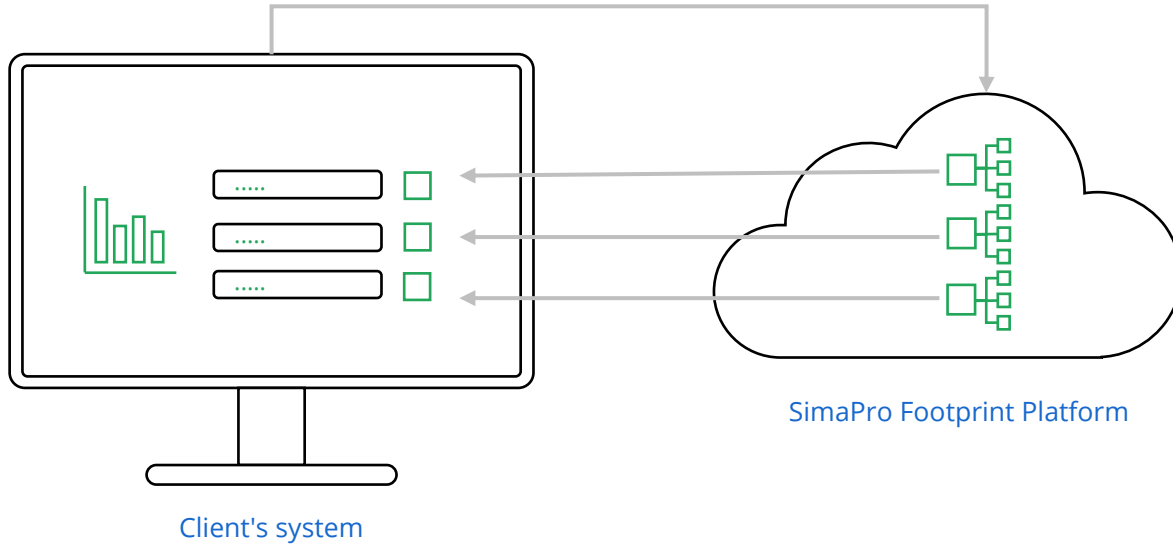


- We create one or more custom-build LCA models that represent your product or entire product portfolio.
- Input data can come from any software or system.

# Flexibility in system integrations for input data



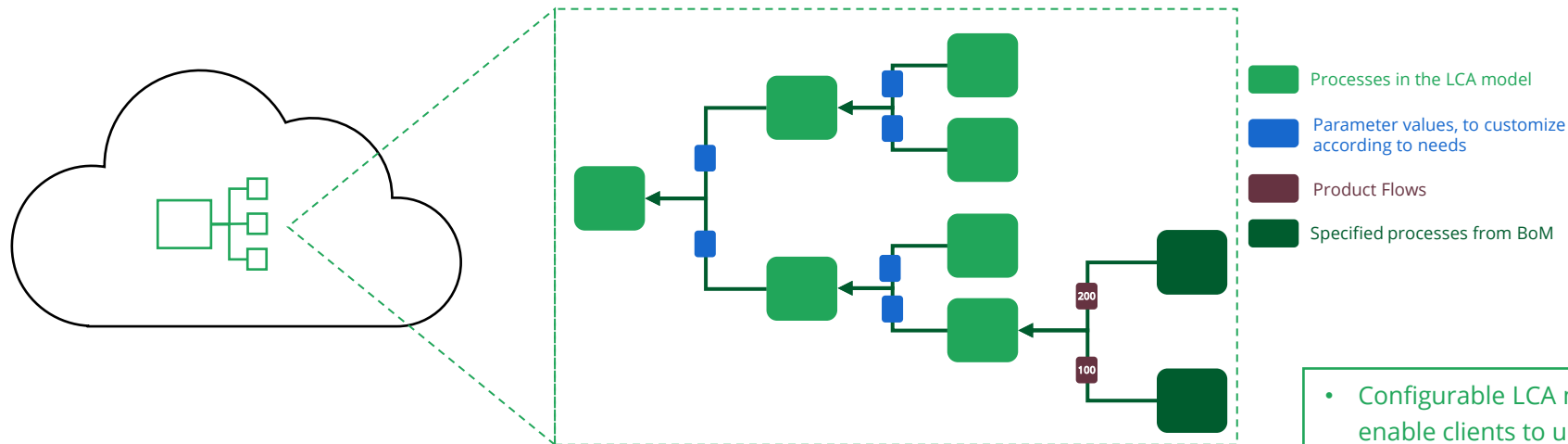
The client's system as a starting point.



- Enrich the client's systems or application with life cycle impact assessment (LCIA) data.
- Input data can come from any software or system.
- System integration via API.

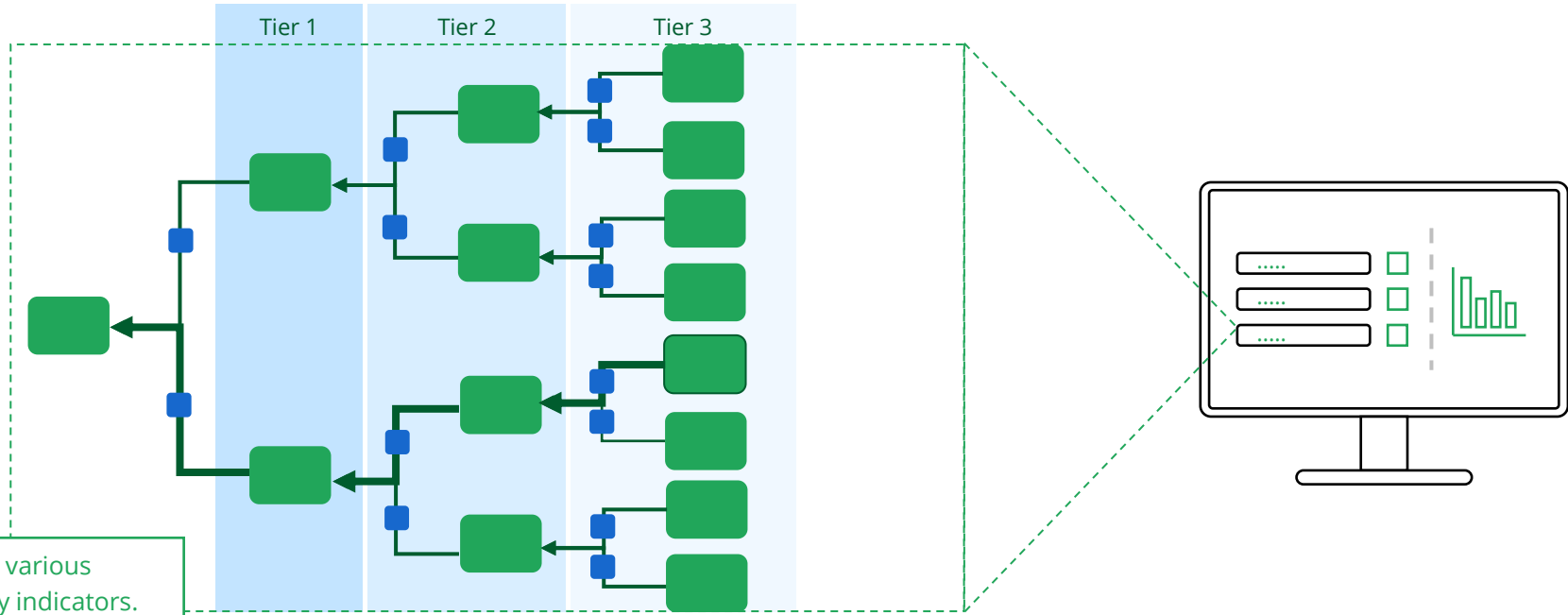


# Scalable calculation of tailored LCA models



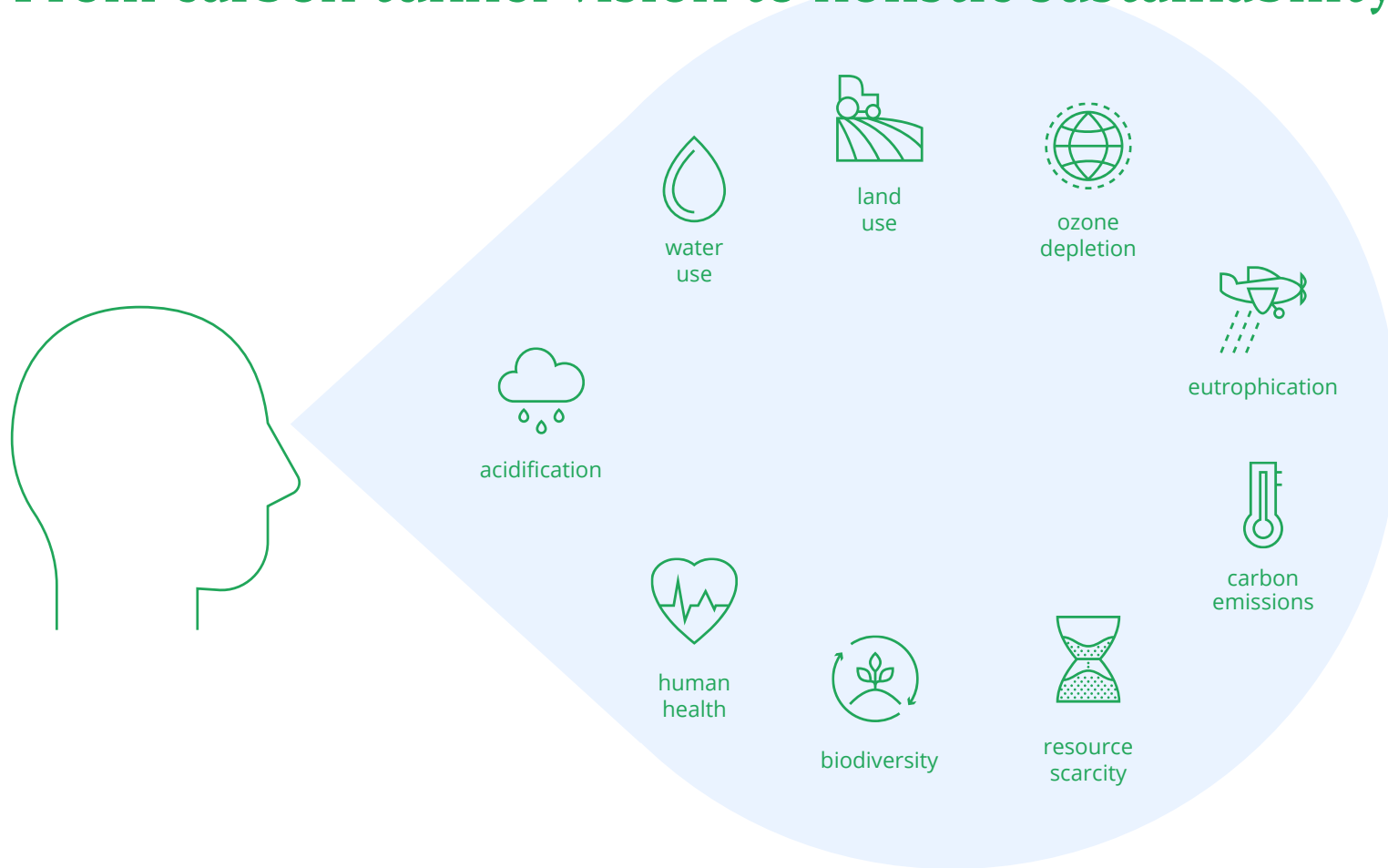
- Configurable LCA models enable clients to update their input data regularly.
- Processes and parameters can be specified to make the model specific to each product.

# Transparent results as detailed as you need them



- Insights into various sustainability indicators.
- Real-time or batched retrieval of results with different depth-levels (tiers).

# From carbon tunnel vision to holistic sustainability view



# Curious to hear your questions!



Reinier Martijn Zwiep  
Product Management & Marketing  
Team Lead  
[Zwiep@pre-sustainability.com](mailto:Zwiep@pre-sustainability.com)

**SímaPro**



[simapro.com](https://simapro.com)