

# SimaPro 7.3.3 database update instructions (from 7.3.2)

SimaPro 7 Technical Note 13, February 2012

## 1 Update of the database

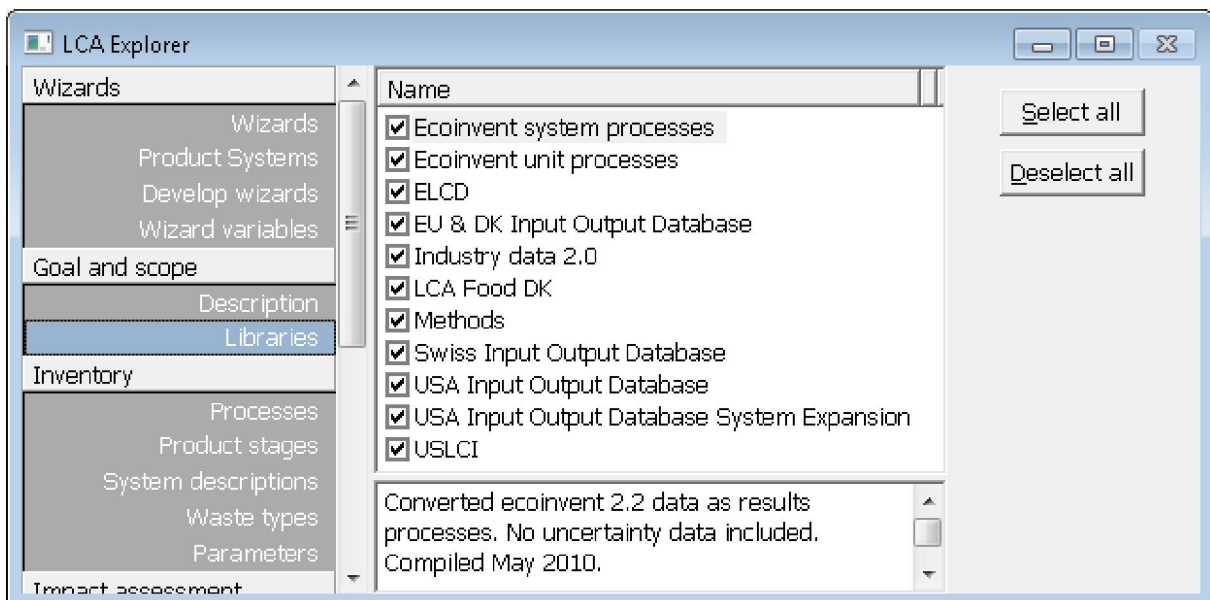
This document describes how to update your database with new and updated data. This update will change the results of your calculations as methods have been updated.

Importing a database is memory and processor intensive, so we recommend setting aside 2 to 3 hours and limiting the number of other programs running on the computer (also in the background). The computer on which the update is performed should meet the system requirements: [www.pre-sustainability.com/content/system-requirements](http://www.pre-sustainability.com/content/system-requirements). On slower computers or computers with limited free RAM memory the update can take a very long time or crash altogether. A backup of your database is made during the import procedure. You can use this copy of the database to compare the results between the old and new version of the database.

The update process is a sequence of three groups of actions, which are described in detail further on in this document:

- 1) You first install an update database that contains the new data.
- 2) Then you import this database into your SimaPro database(s).
- 3) Finally, after finishing the import, you run an Append action (in the Substances screen) to merge synonyms in the substance list.

First, please check if you can see the libraries shown in the screenshot below in your SimaPro library section (your version of SimaPro can contain more libraries).



- If you see all these libraries in your SimaPro database, then please proceed with the instructions in this document.
- If you miss libraries then download and import the Full SimaPro 7.1.8-7.3.3 update database (download and installation instructions via [www.pre-sustainability.com/versioncheck](http://www.pre-sustainability.com/versioncheck)).

### 1.1.1 Multi-User version (professional licenses only):

Updating the database will be quicker if you do the update locally on your own PC. Make sure no users are logged in, close the SimaPro Database Server and then move or copy the database (77 numbered \*.nx1 files: from \*\*\*00.nx1 to \*\*\*76.nx1) to your local hard drive (see 1.2 for the location of the database). In the “Open SimaPro Database” window, choose “Local server”, browse to the database location and follow the instructions below. Owners of a Classroom licence can request a temporary single user licence via [support@pre-sustainability.com](mailto:support@pre-sustainability.com) to do the update locally.

## 1.2 Installation of the update database

- 1) After downloading the “SimaPro 7.3.3 Update database” (SetupUpdateDatabase733.exe) from [www.pre-sustainability.com/versioncheck/](http://www.pre-sustainability.com/versioncheck/), run the program and then follow the instructions in the setup wizard. This will store the update database on your computer.
- 2) You still have to import the update database into your own database(s) and perform an append!

The “Update733” database is installed in the following default directories:

- Windows Vista, Windows 7, Windows 2008 Server:  
C:\Users\Public\Documents\SimaPro\Database\
- Windows XP, Windows 2003 Server:  
C:\Documents and Settings\All Users\Shared Documents\SimaPro\Database\

*Multi-User version:* the update database does not have to be installed in one of the locations (directory aliases) defined in the SimaPro database server. You can install locally.

## 1.3 Import of the update database

To finalize the update of your SimaPro database(s), follow these steps to import the new data:

- 1) If SimaPro is closed: Start SimaPro.
- 2) Use “Open SimaPro Database” under File to open the database you want to update (**the database you usually work in**).  
*Multi-User version:* Start SimaPro 7.3.3 Multi-User and login as *Manager*. As the database will be locked during import, no other users may be logged in at this moment. Continue as above.

Once you opened your database, in the menu File, select “Import SimaPro Database” and select the “Update733” database from the list and click the Open button. If you do not see it, browse to one of the default installation locations (see 1.2) or the location where you installed it.

- 3) Click the “Select all” button in the bottom left of the window. Click on the “Import” button.
- 4) The data are scanned and an overview is generated of all the data that are added or replaced. We recommend that you save this overview. Remember that any changes you made in the libraries (e.g. ecoinvent) or in the original methods will be lost when the data are replaced. Data sheets you added will still be there.
- 5) Click OK to start the import process. When you import ecoinvent libraries, SimaPro asks you to verify the replacement of each process when updating existing libraries. Click on the “Yes to all” button to accept all replacements.
- 6) After final confirmation, a backup will be made of the database. The actual import will start. A message will appear once the import is successfully completed. Note that this process can take considerable time.  
**There still is one more step required to complete the update!**

- 7) Go to the "Substances" section under "General Data" in the LCA explorer screen (home). Click on the "Append" button. A new window will open. Click the "Load" button on the right hand side and select the append file "AppendSubstances733.xls". The AppendSubstances733.xls file is found in the SimaPro database directory (see 1.2 for default locations). You can ignore the message "Some lines are not read. Do you want to see the errors?" by clicking No.
- 8) Now click the OK button on the bottom of the window. After final confirmation the substance list will be appended. Depending on the size of your database this may take some time.
- 9) After finishing the Append action, you may want to create a backup of the updated database via File> Database Management> Backup/Restore> Backup.
- 10) Repeat this for all other SimaPro databases you want to update (please check if they need the most recent or the full update).
- 11) When finished, you can delete the "Update733" database.
- 12) To use the new libraries in your projects, go to "Libraries" in the "Goal and Scope" sections and check the libraries that you want to use.

## 2 Making backups

You probably know that PCs, laptops and even network servers crash, get stolen, fall, get coffee spilled over them, or become infected with a virus. You also know that your colleagues or your neighbour's children may accidentally delete a project or perhaps a database file. You also know that neither you, nor your own children, will ever do these kind of things. And we at PRé Consultants know that although we succeeded in creating a very stable system, there still remains a very small chance that a SimaPro database will crash beyond repair.

Murphy's Law dictates there is a minor chance that such a problem will occur to you. But if it does happen, it will typically be just before an important deadline or just after you have spent a full week of entering data into SimaPro.

Even though this sounds dramatic, in fact it could be a relatively small problem. You simply get a new computer, reinstall SimaPro, and restore your latest backup so ideally you only lose a day's work. If only you made that backup yesterday...

Thus: do make regular backups. The backup should not be located on your own PC, but on a CD or a server drive for example. If your server is centrally backed up every night, make sure all the SimaPro database files are included, that the SimaPro database is not in use, and that it is indeed possible to retrieve the database from the backup file.

So, start now with making a backup of your database. You can use the backup function in SimaPro, under File, Database Management in the menu. And remember to make the next backup soon!

If you make central backups, this information will be useful:

- When you make a backup, SimaPro must be closed and no users can be logged in the multi-user version.
- A SimaPro 7.3 database consists of 77 numbered \*.nx1 files, in the format DatabaseName00.nx1 to DatabaseName76.nx1.
- All files must be saved at the same time, as they are interconnected.
- The default location of SimaPro databases is:
  - Windows Vista, Windows 7, Windows 2008 Server:  
C:\Users\Public\Documents\SimaPro\Database\
  - Windows XP, Windows 2003 Server:  
C:\Documents and Settings\All Users\Shared Documents\SimaPro\Database\

**Needless to say: we sincerely hope you never need your backup!**