



SimaPro 7.3 installation manual

February 2012



Contents

- 1 Single user installation 1
- 1.1 Installation procedure 1
 - 1.1.1 . Installation1
 - 1.1.2 . Using the single user database on a network drive1
- 2 Multi-user installation 2
- 2.1 Multi-user configurations 2
- 2.2 Configurations on a Windows network 3
 - 2.2.1 . SimaPro Database Server on network server3
 - 2.2.2 . SimaPro Database Server on a workstation3
 - 2.2.3 . Installation on a terminal server3
 - 2.2.4 . Firewalls3
 - 2.2.5 . Compatibility with Antivirus software4
- 2.3 Installing SimaPro 7.3 Database Server 4
 - 2.3.1 . Installation as a standalone application4
 - 2.3.2 . Install SimaPro Database Server as a service5
 - 2.3.3 . Manually install as a service5
 - 2.3.4 . Change server settings5
 - 2.3.5 . Best practices for managing user groups with several databases6
- 2.4 Installing SimaPro 7.3 multi-user (client) 6
 - 2.4.1 . Installation7
- 2.5 Using SimaPro Multi user as pseudo single user 8
 - 2.5.1 . Transferring projects8
 - 2.5.2 . TCP Problems8
- 2.6 Installing client software centrally (Classroom) 8
- 2.7 Importing Users from Windows 9
- 3 SimaPro 7.3 system requirements 10
- 3.1 SimaPro 7.3 single and multi user client 10
 - 3.1.1 . Operating system (O/S)10
 - 3.1.2 . 64 bit Windows O/S10
 - 3.1.3 . Internal Memory10
 - 3.1.4 . Screen resolution10
 - 3.1.5 . Processor10
 - 3.1.6 . Hard disk10
- 3.2 SimaPro 7.3 Database Server 10
 - 3.2.1 . Operating system10
 - 3.2.2 . Internal Memory11
 - 3.2.3 . Hard disk11
- 4 Using SimaPro in special situations 11
- 4.1 Running SimaPro with Terminal Services 11

4.2	Running SimaPro on Apple or Linux.....	11
5	Activation	11
6	Updates	11
7	Database backups	12
8	Database compatibility.....	13
9	Language support.....	13
10	Support	14
	Appendix: SimaPro directories	15
	Software	15
	Manuals	15
	SimaPro 7.3 Database	15
	License	15
	User output and export	15
	Appendix: Terminal Server Configurations	16
	Technical Requirements	16
	Server Requirements	17
	Client Session Requirements	17
	Remote Client Requirements	18
	Installation	18
	Maintenance	18
	Backups	18
	Database Server Crash	18
	Database and Program Administration.....	19
	Locked User Sessions	19
	Colophon.....	20

1 Single user installation

The SimaPro 7.3 installation file installs all versions of SimaPro. You have to enter the registration name and code during the installation.

You can always download the latest installation file from <http://www.pre-sustainability.com/install>. Alternatively, you can find the installation files on the SimaPro 7.3 CD-ROM.

The installation program will install the SimaPro version and accompanying databases based on your registration name and code. After installation, activation is required when you start SimaPro, except for the educational SimaPro Faculty license.

Please note that for each user license you have one activation, i.e. only one installation is possible. To move SimaPro to another computer, you first need to de-activate. Deactivation is only possible by uninstalling the software while connected to the internet.

For guidance on updating the software and database, please see the appropriate documents. You can check for updates via the Help menu in SimaPro.

1.1 Installation procedure

1.1.1 Installation

Step 1 Download and install the SimaPro pre-installer file from <http://www.pre-sustainability.com/install> or insert the SimaPro 7.3 CD-ROM in the CD-ROM drive. An installation menu appears on the screen. If it does not appear:

- Start Windows Explorer
- Select the CD-ROM drive
- Double click on 'CDSTART'

Step 2 In the installation menu, click on 'installation' and click 'Install SimaPro'.

Step 3 Follow the instructions on the screen.

The end-user needs read-write access to the directory where the database is installed. You can choose a different installation directory for the database (please refer to paragraph 2.3.1 step 4 for the default directory), for example a server drive. This may be preferred for backup reasons.

Step 4 Upon starting SimaPro for the first time, you are asked to activate your license. You can do this automatically via the Internet. If the connection with our activation server is blocked by a firewall, please choose one of the manual options. See also paragraph 2.2.4.

Now you are ready to start using SimaPro!

1.1.2 Using the single user database on a network drive

It is possible to use the database on a network server. This may be preferred for backup reasons. Note however that a single user database can only be opened by one user at a time.

During the installation, you can indicate the drive and path where the SimaPro database must be installed. If you have already installed the database in the default directory (see paragraph 2.3.1 step

4), you can move it to a new location. To move the database, make sure SimaPro is closed. Using Windows Explorer, move or copy the database(s) to a new location on the server.

A SimaPro 7.3 database consists of 77 numbered files with the extension *.nx1 (from ***00.nx1 to ***76.nx1). It is important that you copy or move all files at once, as the files are interconnected.

Next, start SimaPro and choose Open SimaPro Database under File in the menu. Choose Browse and select the database directory on the server. If you do not use the locally installed database, you can delete it.

2 Multi-user installation

The SimaPro 7.3 multi-user installation installs both temporary and indefinite licenses of all SimaPro 7.3 multi-user versions, including the educational Classroom version. You must enter the registration and code during the installation. The installation of the multi-user version has 2 steps:

1. Install SimaPro Database Server
2. Install the clients

You can download the latest installation file from <http://www.pre-sustainability.com/install>. Alternatively, you can find the installation files on the SimaPro 7.3 CD-ROM.

The installation program will install the SimaPro version and accompanying databases based on your registration name and code. After installation, activation is required except for the educational Classroom version.

Please note that for each user license you only have one activation, i.e. you have as many installations as you have users. To move the SimaPro client to another computer, you first need to de-activate. Deactivation is only possible by uninstalling the software while connected to the internet.

For guidance on updating the software and database see the appropriate documents. You can check for updates via the Help menu in SimaPro.

2.1 Multi-user configurations

SimaPro multi-user is a so-called client-server application. The client is the SimaPro 7.3 multi-user software, which performs the calculations and handles the user-input. The server is a program that controls the storage of the data and checks the number of users, and is called SimaPro Database Server. The SimaPro Database Server allows multiple clients to work within a single SimaPro database. So you need a computer (e.g. a server) to run the SimaPro Database Server and computer(s) (desktop or laptop) to run the SimaPro multi-user clients. In most cases, you use a Windows 2003 or 2008 Server, or a dedicated computer to run the SimaPro Database Server. However, it is possible to install both the client and the server on the same computer as well.

When the SimaPro database server and SimaPro clients are connected by a (wired) Local Area Network (LAN) then the SimaPro Database server can be installed on a network server. In case a wireless network is used, it has to be a high speed, high bandwidth network to be able to handle the large data traffic, otherwise calculations might be slow.

When the connection is a long distance connection (WAN), VPN, or remote sites, then the SimaPro Database Server should be installed on an application server like Microsoft Remote Desktop or Citrix XenApp (see Appendix: Terminal Server Configurations).

2.2 Configurations on a Windows network

2.2.1 SimaPro Database Server on network server

This is the most likely configuration:

- SimaPro Database Server: on Windows 2003/2008 server
- SimaPro client: on Windows XP, Windows Vista or Windows 7
- Protocol: TCP/IP
- Network: Wired Ethernet

2.2.2 SimaPro Database Server on a workstation

SimaPro Database Server can be installed on any workstation with a Windows operating system. When a SimaPro user wants to run SimaPro 7.3 multi-user, both the workstation and SimaPro Database Server must be running so SimaPro can connect to the multi user database.

The SimaPro Database Server and SimaPro client can be installed on the same computer.

2.2.3 Installation on a terminal server

You can install SimaPro Database Server and SimaPro multi user on an application server like Microsoft Remote Desktop or Citrix XenApp (see [Appendix: Terminal Server Configurations](#)). This is recommended in case of long distance connections (WAN), VPN and remote sites. The maximum amount of concurrent users is defined by the license.

The users connect to the terminal server. Both server and client are installed on that computer/server. Users start SimaPro within the server machine to which they are connected.

Depending on the configuration, activation for each “user box” may be necessary.

No installation of SimaPro on client computers is needed, only the client software of the terminal server. In case of Windows Remote Desktop Connection it is included in Windows XP and higher. In case of Citrix, the Citrix client has to be installed once per workstation.

On Windows Server 2008 R2 the firewall is not automatically configured, you need to do this manually, both for the SimaPro database server program and the SimaPro client.

2.2.4 Firewalls

SimaPro uses TCP/IP ports 16001 and 17001. If a firewall blocks these ports, the SimaPro Database Server will not be found. Note that previous SimaPro versions used ports 16000 and 17000.

Some firewalls recognize new executables by size and version number. After an update you might need to reconfigure your firewall.

On Windows XP, the SimaPro software is added to the accepted programs list of the firewall during installation.

On Windows Server 2008 R2 the firewall is not automatically configured, you need to do this manually.

2.2.5 Compatibility with Antivirus software

With recent versions of Windows, such as 2008R2 Server, some antivirus programs can interfere with the operation of the database server when they detect that database files have changed. In these situations, users may receive access violation errors at what appear to be random intervals.

To avoid these problems, it is recommended that you add the .NX1 files in your data directories to the list of virus scan exceptions. This will prevent the antivirus software from obstructing access to your data. See sections 2.3.1 and 2.3.4 for more information about default data directories and the aliases that reference them.

2.3 Installing SimaPro 7.3 Database Server

You can install the Database server as a console application or as a service. On most servers it is recommended to install as a service. The difference between a service and a console application is that you have to start the console application to get it to work, like any other software package. A service, on the other hand, is started automatically when the computer starts. It usually does its work 'in silence' and unattended.

Please note that you may need Administrator rights for the computer to install the software.

2.3.1 Installation as a standalone application

Follow this procedure to install the database server as a standalone application. To install as a service, see the next paragraph. Note: we recommend this installation is done by experienced personnel in your IT department.

Step 1 Download and install the SimaPro pre-installer file from <http://www.pre-sustainability.com/install> or insert the SimaPro 7.3 CD-ROM in the CD-ROM drive. An installation menu appears on the screen. If it does not appear:

- Start Windows Explorer
- Select the CD-ROM drive
- Double click on '**CDSTART**'

Step 2 In the installation menu, click on 'installation' and click 'Install SimaPro Database Server'.

Step 3 Follow the instructions on screen.

Choose 'As standalone application' at the question 'Install SimaPro Server as a service or standalone?'

The default directory for the software is '\\Program files\\SimaPro 7.3 Database Server'.

The default directory for the database is

- Windows XP and 2003 Server:
 '\\Documents and settings\\All users\\(shared) documents\\SimaPro\\Database'
- Windows Vista, Windows 7 and 2008 Server:
 '\\Users\\Public\\Public Documents\\SimaPro\\Database'

Note that the database server needs read-write access to the directory where the database is installed.

2.3.2 Install SimaPro Database Server as a service

Only for system administrators

Installing SimaPro Database Server as a Service has the advantage that you do not have to login into Windows Server to start the SimaPro Database Server.

Choose ‘As service’ at the question ‘Install SimaPro Server as a service or standalone?’

A user named “SPServiceUser2” is automatically created. This user is granted “logon as a service” rights. Note that this user is deleted on uninstall, however the profile is not. You have to delete the user and the user profile to erase all traces.

When SimaPro Database Server is ready and running, you can proceed with installing the SimaPro 7.3 multi-user (client) program.

System administrators can use the Windows Service Controller (Start->Run->services.msc /s) to review and manage what the installer has created. The service name is “SimaPro 7.3 Database Server”. Alternatively, the small application “ServiceController” has been created to install, start, stop and uninstall the database service.

2.3.3 Manually install as a service

To start the SimaPro Database as a service after installing as an application use the command:
NxServer /install /start /UserName:aUsername /Password:aPassword

You need a user that has “logon as a service” rights. You can check this in “administrative tools”, “local security policy” (or Start->Run->secpol.msc /s) then “local policies”, “user rights assignments”.

On installation as a service, SimaPro automatically creates the following user:

Username = 'SPServiceUser2'
Password = 'Exus2006\$'

You can use these details if you want to install the service manually. For example, after testing the SimaPro Database Server console application.

2.3.4 Change server settings

To change settings in the SimaPro Service start the database server management program (command: NxServer, or Start->All Programs->SimaPro 7 Database Server->SimaPro 7.3 Database Server). First, the service is stopped. Make your changes. When you exit the management program the service is restarted with the new settings. If you are using Windows Vista or higher, please remember to run the management program as an administrator (right-click the application icon and select: Run as Administrator).

Important-> Opening the database management program when the database is running as a service will log out all current users!

Information about the settings in the SimaPro database server can be found in the help file. The most common settings that are changed:

Server Name

The name of the server as it is shown in SimaPro 7.3 multi-user (client). By default, this is “NexusDB”. Set this name once when you are installing SimaPro Database Server and never change it afterwards. Hence, if you change the name, you have to change it in all SimaPro multi-user installations as well.

Aliases (Database directories)

These are the directories where the SimaPro databases are stored. You can store multiple databases in one directory. The directory is not visible in SimaPro multi-user client, only the Alias is visible. The name of the alias can only contain text, numbers and underscores.

Example:

Alias = ‘Default’

Directory = ‘\Document and settings\all users\documents\SimaPro\Database’

2.3.5 Best practices for managing user groups with several databases

If you have groups of users who have their own databases and often work independently of each other, there are some limitations to be wary of and guidelines you can follow to simplify the independent management of these databases.

One drawback of creating several databases under the same alias is that all databases must be closed if database management tasks need to be applied. Also, while database management tasks are being applied to one database, all other databases will be unavailable. These management tasks include:

- Opening one of the databases with “local server” access;
- Checking for database errors; or
- Updating the library data or methods.

The solution to these problems is to create separate aliases for each database using the management program (see 2.3.4). At a simple level, each alias corresponds to a separate directory on the databases server’s file system.

Imagine the following scenario:

<i>User group</i>	<i>Alias</i>	<i>Directory</i>
Energy	Energy	C:\Document and settings\all users\documents\SimaPro\Database\Energy
Consumer goods	FMCG	C:\Document and settings\all users\documents\SimaPro\Database\FMCG
Medical	Medical	C:\Document and settings\all users\documents\SimaPro\Database\Medical

If the above alias and directory structure is used, then all three groups can independently manage their databases without the other groups being affected. Please remember to run the database management program with administrator privileges (right-click the icon: Run as Administrator) when adding aliases.

2.4 Installing SimaPro 7.3 multi-user (client)

The SimaPro 7.3 installation installs both temporary and indefinite licenses of Professional multi-user versions and educational multi-user Classroom. You must enter the registration name and code during the installation. The client must be installed on a local computer.

You may need Administrator rights for the computer to install the software. Please contact your IT department for details on how to login with Administrator rights.

If you install clients for the SimaPro Classroom version: please read paragraph 2.62.6 **Error! Reference source not found.** on automatically configuring clients to avoid extra work.

Please note that SimaPro Database Server must be installed first!

2.4.1 Installation

Step 1 Download and install the SimaPro pre-installer file from <http://www.pre-sustainability.com/install> or insert the SimaPro 7.3 CD-ROM in the CD-ROM drive. An installation menu appears on the screen. If it does not appear:

- Start Windows Explorer
- Select the CD-ROM drive
- Double click on 'CDSTART'

Step 2 In the installation menu, click on 'installation' and click 'Install SimaPro'.

Step 3 Follow the instructions on the screen.

The default directory where the software is installed is '\Program files\SimaPro 7.3 multi'

Step 4 After starting SimaPro, activation is required, except for the educational Classroom license. You can do this automatically via the Internet. If the connection with our activation server is blocked by a firewall, please choose one of the manual options. See also paragraph 2.2.4.

Step 5 Selecting the server

After starting SimaPro 7.3 multi user, select 'Open SimaPro database' under File in the menu. In most cases the SimaPro Database Server name appears on screen. It will show as SPSEVER@10.46.0.7, SPSEVER@MYSERVER.MYDOMAIN or SPSEVER@EXAMPLE.ET (only examples!).

If a server name does not appear, click on the 'Servers' button, next click 'Scan'. If the list stays empty, click 'New' and type in the name of the SimaPro Database Server in your organization. You can find this name in the SimaPro Database Server, it is a combination of the server name and the IP address (ServerName@IPAddress). The server name is found under Server Engine in the General section, the IP number is found under TCPIPv4Transport at the Local Address.

Type the name correctly as typing errors will prevent SimaPro from finding the server. Next, click OK and SimaPro will try to connect to the SimaPro Database Server. If successful, a list of locations will appear. Locations are aliases for directories on the SimaPro Database Server. Note that only databases in one of the aliases can be opened. Aliases (an alias points to a location) can only be created using the SimaPro Database Server software. If you use a professional license, you can also select the local server in which you can use the browse options to point to a local directory.

Step 6 Log into the database as Manager. By default, there is no password for the manager defined, simply leave the password field blank. To login as one of the predefined users, use the user name as the password.

To change the manager password (highly recommended), or to create new users and user types, go to User Management under Tools in the SimaPro menu. A special wizard will assist you when you need to create multiple user accounts.

The Manager has all the rights to edit the database, import data, and create users and user types with different access possibilities to the various projects. Please make sure that the person who manages the database in practice, knows the manager password and the associated responsibilities.

2.5 Using SimaPro Multi user as pseudo single user

All professional SimaPro multi user clients can work as pseudo single user version, if the multi user client is installed locally. This means that Multi user users can work in SimaPro as if it was a single user version on a database that is stored on the computer locally. This is especially useful for updating databases or showing result to clients on location. Note that this feature is not available in the Classroom license.

SimaPro databases on the local hard drive can be opened by choosing “Local server” in the open database window. Next, browse to the directory where a SimaPro database can be found.

When you copy a SimaPro multi user database to the local hard drive, make sure no users are logged in and that you copy all 77 *.nx1 database files at once.

Note: If a multi-user database is copied that is protected with a manager password, this password is needed to open the database locally!

We recommend that users work (modelling/adding data) in the multi user version, and local copies opened in the “pseudo single user” are used for viewing or calculations only as changes made in the local database will not be reflected in the multi user database!

2.5.1 Transferring projects

Databases cannot be synchronised, projects can only be imported into another database, overwriting the projects with the same name. So try to work in the shared multi user database as much as possible. If users work in several pseudo single user databases this can give synchronisation problems.

To move projects from a local database to the multi user database on the server, you need to import the project(s) on which you have worked into the multi user database. You need to use the Import SimaPro Database function under the File menu, which is only available when you log in as manager.

Make sure that no other users have worked in the same projects in the shared database, as their work most certainly will be overwritten. Even though a back up is made on import, it may be difficult to synchronize these data with your own.

Never copy or move a database from your local hard drive to the location of the multi user database, this will overwrite all data and destroy all new work made by other users (unless you are absolutely sure no one has worked in the database).

2.5.2 TCP Problems

Sometimes SimaPro cannot find the local database server. This is caused by the fact that Windows disables TCP/IP when the computer is not connected to a network or internet. To enable TCP/IP in this situation you need to activate the ‘Local loopback adaptor’. This is in fact a setting in Windows. Search the Microsoft Knowledge Base for installation guidelines.

2.6 Installing client software centrally (Classroom)

This procedure only works for the educational SimaPro Classroom license. Do not use it for the professional multi user version, as deactivation of the multi user client software will not be possible.

In a multi user environment with many clients, as is the case with the SimaPro Classroom, you can use this procedure to speed up the rollout. It also prevents you from updating all client installations when an update is available, as there is only one client to update.

1. Install the SimaPro multi user client on the server in a Shared directory or directory in which the target group has read access. Alternatively, copy an existing SimaPro multi user client installation (SimaPro.exe + DLLs and other files) to a shared directory.
2. Copy the SimaPro.LCS file to this Shared directory as well.

Default locations for this file are:

Windows XP and 2003 Server:

C:\Documents and Settings\All Users\Application Data\SimaPro\Multi

Windows Vista, Windows 7, Windows 2008 Server and Windows 2008R2 Server

C:\ProgramData\SimaPro\Multi

3. Create a shortcut on all users' desktops or start menus. You can use logon-scripts, profiles or other network management tools.
4. Use command line parameters in this shortcut. For an overview of all command line parameters please refer to the Help menu of the SimaPro Database server.

Example:

F:\Shared applications\SimaPro\SimaPro.Exe /Server:SPServer@central.local /Alias:default /Database:Professional

(NOTE: The command line parameters Server, Alias and Database will not work if the user has opened a database in SimaPro before.)

2.7 Importing Users from Windows

You can import users from Windows or Active directory with a wizard. Go to Tools, User Management, Users and click 'import users'.

1. Select a domain, a computer or an Excel file.
2. Select the users and groups you want to import.
3. You can choose to create a project for every user.
4. You can choose to create passwords.
5. The results are stored in an Excel file that you can use to mail merge the users.

3 SimaPro 7.3 system requirements

3.1 SimaPro 7.3 single and multi user client

3.1.1 Operating system (O/S)

SimaPro 7.3 is a 32-bit Windows application. It runs on Windows XP (32/64 bit), Windows Vista (32/64 bit), Windows 7 (32/64 bit), Windows 2003 Server, Windows Server 2003 R2 64 bit, Windows Server 2008 and Windows Server 2008 R2 64 bit. It is highly recommended to have the latest service packs installed. Earlier operating systems are not officially supported. Be aware that Windows Vista and Windows 7 allow for much larger LCA models than Windows XP due to their improved memory management. 64 bit operating systems allow for even larger models.

3.1.2 64 bit Windows O/S

SimaPro 7.3 can be used under a 64 bit Windows operating system without any problems. If enough memory is installed it can even run better than under a 32 bit O/S, especially if you calculate very large models.

3.1.3 Internal Memory

We recommend at least 2 GB of physical memory. The amount of memory needed for a reasonable performance depends on the size of your SimaPro database and the structure of the models you make, plus any other applications you run simultaneously. If you plan to do calculations on large models or extensive Monte Carlo analysis, more memory is recommended.

SimaPro on its own, i.e. excluding O/S requirements, uses a minimum of 100 MB RAM and typically about 250 MB. If you are calculating extremely large networks the memory usage can go up to 2.5 GB or more. This is only possible if Windows can access more than 3 GB of memory, which is supported by 64 bit operating systems.

3.1.4 Screen resolution

The minimum resolution for SimaPro is 1280 x 1024, recommended is a higher resolution, a wide screen monitor works best.

3.1.5 Processor

SimaPro is a single-threaded application which does not use multiple cores. You only need a multiple core processor if other heavy applications are running. If this is the case, we recommend a 64 bit operating system.

3.1.6 Hard disk

Check if there is enough space on the hard drive. You need at least 2 GB disk space for your database(s) when using the single user version. For the multi-user version the database is found on the server, local hard disk space is not an issue, unless the database is used locally.

In addition, SimaPro may need a minimum of 5 GB (recommended: 10+ GB) of free hard disk space for temporary files.

3.2 SimaPro 7.3 Database Server

3.2.1 Operating system

The SimaPro 7.3 Database Server is a 32-bit Windows application. It runs on Windows XP (32/64 bit), Windows Vista (32/64 bit), Windows 7 (32/64 bit), Windows 2003 Server, Windows Server 2003 R2 64 bit, Windows Server 2008 and Windows Server 2008 R2 64 bit. Earlier operating systems are not officially supported. It is highly recommended to have the latest service packs installed.

3.2.2 Internal Memory

We recommend a minimum of 1 GB internal memory.

3.2.3 Hard disk

Although SimaPro Database Server itself is small (10 Mb), at least 1 GB space is needed for each installed database.

4 Using SimaPro in special situations

4.1 Running SimaPro with Terminal Services

Because SimaPro is an executable without the need of many dlls, you can run SimaPro with Windows Terminal Service or Citrix XenApp easily. SimaPro uses no special external programs, except for the Excel link if Excel is running. If Excel is not running on the computer, SimaPro reads the Excel files directly. See also the appendix.

4.2 Running SimaPro on Apple or Linux

SimaPro works with Windows operating systems. Should you wish to run SimaPro on a Macintosh, or a PC with Linux as operating system, you need to use Windows emulation software. Note that as the emulation software itself will use a lot of internal memory, you may need to add memory to your computer to achieve reasonable performance.

Please note that we do not support, nor guarantee the functionality of SimaPro on non-Windows operating systems, even when it is run using emulation software. You do this at your own risk; PRÉ or their local partners cannot provide any technical support to solve problems.

Remote access to a Windows computer on which SimaPro is installed may be a suitable workaround.

5 Activation

The SimaPro software has to be activated at the first start-up. Activation is not needed for the educational Classroom and Faculty licenses.

During the activation process, no personal information is collected. The activation is based on a “machine-ID”, which is generated by SimaPro from the hardware properties in a PC. This makes the activation code specific for the computer for which it was requested.

Note that for each user license, you have only one activation. If you want to move SimaPro to a new computer, you must uninstall the software while connected to the internet.

See also the SimaPro FAQ at <http://www.pre-sustainability.com/faq>.

6 Updates

PRÉ Consultants will regularly make software and database updates available to users with a valid service contract. To inform you of the availability of new updates, it is important that we have your

correct contact details, most importantly your e-mail address. Please notify us of any changes in your contact details, or if the main contact person for SimaPro changes.

You can check if updates are available via the 'Check for updates' option under Help in the SimaPro menu. This option will check if the latest software is installed, not if all database updates are done. The check is only available if you have a valid service contract. Additionally you will find information on available updates in the About screen.

Updates can be downloaded via our web site and come with clear installation instructions. If you do not have a valid service contract and want to install any updates, you need to upgrade to the current version first. Please contact PRé Consultants or your local partner for information on how to order an upgrade.

7 Database backups

You probably know that PCs, laptops and even network servers crash, get stolen, fall, get coffee spilled over them or become infected with a virus. You also know that your colleagues or your neighbour's children may accidentally delete a project or perhaps a database file. You also know that neither you, nor your own children, will ever do these kind of things. And we at PRé Consultants know that although we succeeded in creating a very stable system, there still remains a very small chance that a SimaPro database will crash beyond repair.

Murphy's Law dictates there is a minor chance that such a problem will occur to you. But if it does happen, it will typically be just before an important deadline or just after you have spent a full week of entering data into SimaPro.

Even though this sounds dramatic, in fact, it could be a relatively small problem. You simply get a new computer, reinstall SimaPro, and restore your latest backup so ideally you only lose a day's work. If only you made that backup yesterday...

Thus: do make regular backups. The backup should not be located on your own PC, but on a CD or a server drive for example. If your server is centrally backed up every night, make sure all the SimaPro database files are included, that the SimaPro database is not in use, and that it is indeed possible to retrieve the database from the backup file.

So, start now with making a backup of your database. You can use the backup function in SimaPro, under File, Database Management in the menu. And remember to make the next backup soon!

If you make central backups, this information will be useful:

- When you make a backup, SimaPro must be closed and no users can be logged in the multi-user version.
- A SimaPro 7.3 database consists of 77 numbered *.nx1 files, in the format DatabaseName00.nx1 to DatabaseName76.nx1.
- All files must be saved at the same time, as they are interconnected.
- The default location of SimaPro databases is

Windows Vista, Windows 7, Windows 2008 Server:
C:\Users\Public\Documents\SimaPro\Database\

Windows XP, Windows 2003 Server:
C:\Documents and Settings\All Users\Shared Documents\SimaPro\Database\

Needless to say: we sincerely hope you never need your backup!

8 Database compatibility

Databases from previous SimaPro versions can be converted to SimaPro 7.3 database format without loss of data.

SimaPro 7.0 and 7.1 databases

SimaPro 7.0 and 7.1 databases are automatically converted to SimaPro 7.3 format on opening the database. A copy of the database in the original format is made with the extension “_version71” after the database name. This serves as a database backup.

After conversion, the converted database cannot be opened with SimaPro 7.0 or 7.1 anymore. If you need the original database, open the renamed copy of the database with SimaPro 7.0 or 7.1.

During conversion several checks are performed. If SimaPro tells you there are problems in the database, please save the error report. In this case, run a database check (File, Database management, Check) and send the results of the check together with the error report to the helpdesk using the “E-mail helpdesk” option in the Help menu.

Note that a technical conversion does not mean the database is updated with the latest data! You will still need to import the update database. See the update instructions that come with each database update.

SimaPro 6.0 databases

SimaPro 6.0 databases must be converted with a special conversion tool to SimaPro 7 format. Please contact the helpdesk for more information.

SimaPro 5, 6, 7.0 and 7.1 CSV files

CSV files in SimaPro 5, 6, 7.0 and 7.1 format can be imported by SimaPro 7.3 SimaPro 7 CSV files cannot be imported in SimaPro 5 and 6, due to the fact that the format has been extended.

Previous versions

Please contact us via support@pre-sustainability.com or phone +31 33 4555010 to obtain detailed information.

9 Language support

The SimaPro software can be run in various languages. To change the language in which SimaPro is run, go to Tools in the menu and select Language. Although SimaPro will instantly update with the

selected language, not all text is translated the first time. Therefore we recommend to restart SimaPro.

Note that the SimaPro database, help file and manuals are only available in English.

10 Support

For technical support, first please check the support corner on our website to see if the answer you are looking for is already there: <http://www.pre-sustainability.com/landingpages/support-corner> .

If you live in a country where we have a partner, please contact that partner to receive support in your own language; <http://www.pre-sustainability.com/partners>.

To contact Pre directly, use the “Contact SimaPro helpdesk” feature under Help in the SimaPro menu. This will generate an email with technical information about your license, which helps the helpdesk to answer your question more quickly.

You can contact the SimaPro helpdesk via:

- In SimaPro: Help > Contact SimaPro helpdesk (**recommended**)
- Web site : <http://www.pre-sustainability.com/contact/support>
- E-mail: support@pre-sustainability.com
- Phone: +31 33 4504010

Appendix: SimaPro directories

Below you can find the default directories of SimaPro. It is assumed that C: is your default drive.

Software

Filenames: various

C:\Program files\SimaPro 7
C:\Program files\SimaPro 7 Multi
C:\Program files\SimaPro 7 Database Server

Manuals

Filename: *.pdf files

Subdirectory \Manuals of Software

Check our website for the most recent versions of the manuals:

<http://www.pre-sustainability.com/content/manuals>

SimaPro 7.3 Database

Filename: 77 numbered *.nx1 files, default starter00 to 76.nx1 or professional00 to 76.nx1

Windows XP, 2003 and 2003R2 Server:

C:\Documents and Settings\All Users\Shared Documents\SimaPro\Database\

Windows Vista, 7, 2008 and 2008R2 Server:

C:\Users\Public\Documents\SimaPro\Database\

License

Filename: simapro.lcs, simapro.aii

Windows XP, 2003 Server and 2003R2 Server:

C:\Documents and Settings\All Users\Application Data\SimaPro\[Single/Multi]

Windows Vista, Windows 7, Windows 2008 Server and Windows 2008R2 Server

C:\ProgramData\SimaPro\[Single/Multi]

User output and export

Filenames: *.txt, *.xls, *.csv, *.bmp, *.xml

The default location is the user's "My documents/SimaPro" directory.

Appendix: Terminal Server Configurations

Using terminal server software such as Microsoft Remote Desktop or Citrix XenApp is an ideal way to use SimaPro when users have limited bandwidth. This is often the case when users are connected to a Wi-Fi network, a WAN (wide area network) or through a VPN (virtual private network). VPNs often operate over public internet connections.

At the time of writing, PRé has only tested SimaPro in conjunction with a VPN and Microsoft Remote Desktop Services (RDP). Although no XenApp servers are currently available to PRé Consultants, the added overheads of such an environment are assumed to be similar to RDP. When actual tests using these other packages are carried out, such experience will be added to this document.

A number of our clients are currently known to be using SimaPro on XenApp or Remote Desktop servers. While we cannot give technical support on these specific implementations, we see no reason why such configurations should be problematic. Indeed, we believe that the investment in such environments will improve the user experience when bandwidth is at a premium.

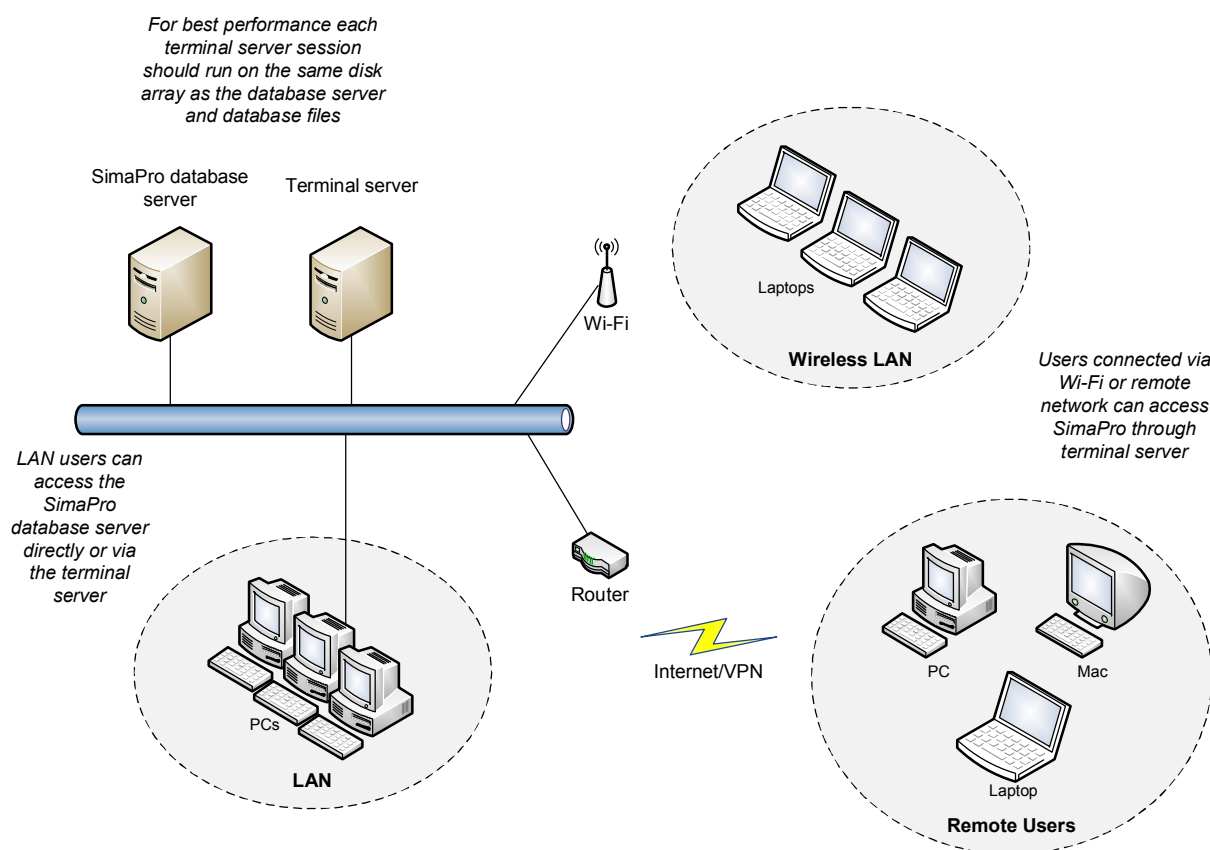


Figure 1: Terminal Server Configuration

Technical Requirements

This document is based on the experience of PRé Consultants' with its own in-house terminal server. Its configuration is Microsoft Remote Desktop running in a VMware ESXi 4.0 virtual machine on a

Windows 2003 server with a maximum of 5 users¹. Industry literature indicates that XenApp offers better security, better load balancing features, and a more natural feeling when connecting to the desired application. These features are more likely to be important when implementing a solution with a large number of users. The points below are based on our experiences and are by no means an exhaustive test of the capabilities and limits of such a solution.

Server Requirements

The minimum hardware requirements of the server are 2 GB of memory (RAM), a 2 GHz quad core processor and Windows 2003 server. Fast hard drives and about 1 GB of free memory are important as a lot of data is transferred between the SimaPro database server and internal cache buffers. For this reason, it is recommended to install the database server and files on the same disk array as the terminal server software. More memory will only be a benefit if you install a 64 bit operating or if you create separate virtual machines for the SimaPro database server and terminal server. Note that it is possible to have several installations of terminal server with the SimaPro client, all connecting to the same SimaPro database server.

Regarding software, a default Microsoft Windows server installation only allows two remote desktop connections and is designed primarily for system administrator access. In the majority of cases, special "Terminal Server Client Access Licenses" have to be purchased from Microsoft for each intended SimaPro user. Additionally, the "Terminal Server Licensing Service" will have to be installed and configured. For Citrix, please refer to their web site for details of software and licensing arrangements.

"Out of the box" the professional database occupies 1 GB of disk space. This only grows significantly when users copy entire libraries, especially those from ecoinvent. The database server software can use up to 10 GB of temporary disk space when accessed by multiple users, but this is managed dynamically based on available disk space.

We have no market preferences for any hardware. Our own server, which performs very well, has a quad core CPU with 16 GB of RAM. Its good performance is likely due to its processing power, its 15000rpm disks, its separation of different application servers using virtual machines, and its connection to a 1 Gbps local network.

Client Session Requirements

With Remote Desktop, each SimaPro client uses on *average* 250 MB with a session overhead of about 50 MB. Each session should have access to the equivalent of a single core 1 GHz CPU. Overworked local area networks (LANs) can have a serious impact on database functions, so it is recommended to use a 1 Gbps network.

Processor and memory demands are relatively low except with functions such as calculating network trees with unit processes, comparing network trees, performing Monte Carlo analyses of several thousand runs, importing SimaPro databases, and copying projects, all of which require large floating point matrices or data buffers to be manipulated. In extreme cases the SimaPro client can use more than 2 GB of memory so be careful not to limit the available memory. Windows XP or later is recommended for the SimaPro client, and Windows Server 2003 or later is recommended for the SimaPro database server.

For complex calculations SimaPro caches opened libraries in temporary files on the hard disk. So for optimal speed it is recommended to have at least 2-3 GB free disk space while using SimaPro. When

¹ SimaPro supports up to 40 concurrent users. Memory limits of your terminal server are likely to be the limiting factor when connecting a large number of users.

SimaPro is closed these temporary files are deleted. If the user exports data, the file size will vary based on the quantity of data selected, i.e. anywhere between a few KBs and 1 GB. Exporting of graphs requires only a few kilobytes for JPEGs and about 1 MB for bitmap files.

Remote Client Requirements

Requirements for the remote client software are very low with the most important requirement being a stable communication link. SimaPro does not make use of animation or sophisticated graphical features, so a 128 Kbps upload/download link should suffice.

For security reasons we recommend that terminal sessions should not be run from a public computer. Extra protection can be implemented hosting the terminal server in a DMZ (demilitarised zone) or requiring a secure VPN connection is made to the network hosting the terminal server.

Installation

There are no special requirements for the SimaPro client on a terminal server that are different to the installation of any other software packages in this kind of environment. With Citrix XenApp, the SimaPro client should be loaded in 'install mode'. As mentioned before, install the SimaPro database server, database files and SimaPro client program on the same disk array for optimal performance.

The SimaPro multi user version operates as a client-server system. Although not ideal, if the client and database are separated by a firewall device, then TCP and UDP ports 16001 should be open (for unsecured transport) and 17001 should be open (for secured transport).

It is common for terminal server sessions to have limited directory creation privileges. To allow correct registration and activation of SimaPro, each session running the SimaPro client should have read/write access to the "Document and Settings/ProgramData" directories mentioned in [Appendix: SimaPro directories](#).

Unfortunately PRé Consultants does not offer software installation services. Our help desk will however answer any specific questions where possible and suggest other options to explore for questions outside their area of expertise.

Maintenance

Backups

The SimaPro database files can be backed up in a multiuser environment, providing no users are editing the database. Unfortunately, no special software agents are available to guarantee a tape backup system can archive the database when it is being used. An alternative method is to use the manual backup function within the SimaPro client software. We recommend performing regular nightly backups in the early hours of the morning when all users are likely to be logged out.

Database Server Crash

In the event of a database server or machine crash, large temporary files may be left in the default Windows TEMP directory. In such cases, the SimaPro database server files may need to be removed manually and can be recognised by the format: XXXX_XXXXXXX.tmp. The SimaPro client will always remove its temporary files automatically upon restarting the application.

Database and Program Administration

Each database has a manager user with its own password. This is required to create user accounts and set project access rights, but these tasks only take a few minutes when they occur. The database manager has full access to all data and projects within a database.

We recommend the client software is installed in a central location and a short cut is made in each client environment, as this minimizes the work needed when a client update is available.

Locked User Sessions

When using terminal sessions and SimaPro, it is possible for users to close their terminal session without shutting SimaPro down. This can occur if their communication link is broken or sometimes it is done intentionally, so users do not need to close off all their work (see Figure 2). When this occurs, the SimaPro client session stays active, which prevents the license from being used by someone else. Additionally, in rare cases, SimaPro can crash but its process stays active in memory, even though no user interface is visible. This will stop the same user being able to log back into SimaPro.

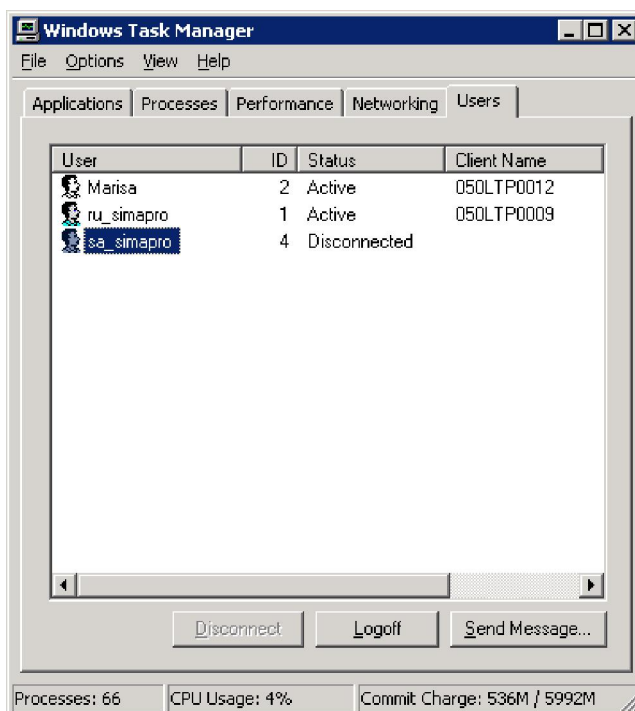


Figure 2: Disconnected but active remote desktop session

The solution to these occurrences is to either:

- Open the terminal session again and shut it down properly, i.e. Log off; or
- Open the Task Manager (left-click the task bar), select SimaPro.exe, and click **End Process** (see Figure 3)

The latter option should only be done as a last resort as it does introduce the risk of corrupting the database.

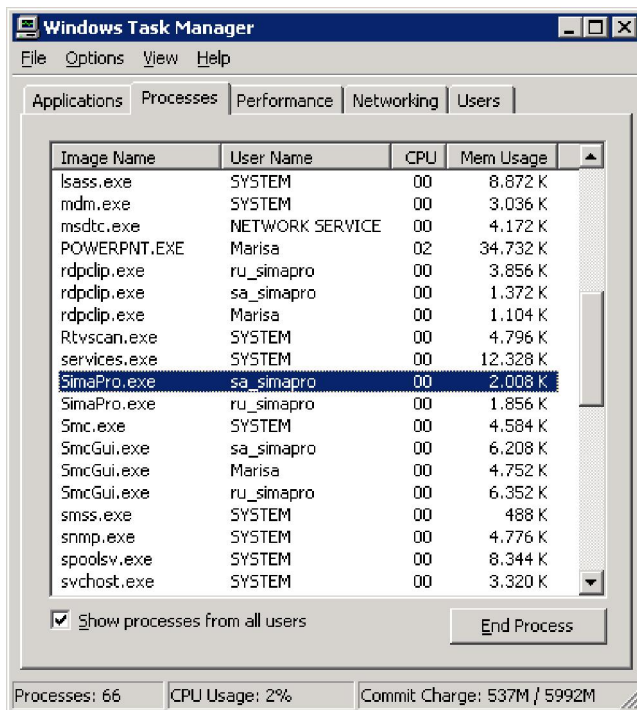


Figure 3: Abruptly terminating SimaPro

Colophon

Title : SimaPro installation manual
 Report version: 1.12
 Date: February 2012
 Written by: PRÉ Consultants bv
 Chris de Gelder, Michiel Oele, Vincent Cleij, Michael Moore, Sipke Durksz, Anneke Haringsma, Taco Wannee
 Copyright: © 2012 PRÉ Consultants. All rights reserved.