



# Update instructions SimaPro 8.0.5 to SimaPro 8.1.0

Title : Update instructions SimaPro 8.0.5 to SimaPro 8.1.0.

Written by: PRé Consultants  
Michiel Oele, Ruba Dolfing

Report version: 1

Date: November 2015

Language: English

Availability: PDF

Copyright: © 2015 PRé Consultants bv. All rights reserved.  
PRé grants the right to distribute and print the unchanged PDF version of this manual for non-commercial purposes only.

Parts of the manual may be reproduced in other work only after permission and if a clear reference is made that PRé is the author.

Phone: +31 33 4504010

Fax: +31 33 4555024

Email: [support@pre-sustainability.com](mailto:support@pre-sustainability.com)

Website: [www.pre-sustainability.com](http://www.pre-sustainability.com)



## Contents

<b>1</b>	<b>INTRODUCTION .....</b>	<b>3</b>
<b>2</b>	<b>UPDATING THE SIMAPRO SOFTWARE .....</b>	<b>3</b>
2.1	MULTI-USER VERSIONS .....	3
2.2	PROCEDURE FOR UPDATING SINGLE-USER AND MULTI-USER CLIENT.....	3
<b>3</b>	<b>UPDATING THE DATABASE.....</b>	<b>3</b>
3.1	DATABASE UPDATE .....	3
3.2	INSTALLING THE UPDATE DATABASE .....	4
3.3	IMPORTING THE UPDATE DATABASE.....	5
3.4	APPENDING SUBSTANCES .....	7
3.5	USING THE REPLACEMENT FILE .....	8

# 1 Introduction

This document describes how to update your current software and database from SimaPro 8.0.5 to the new SimaPro 8.1.0. In the “What’s new in SimaPro 8.1” document you find information about the changes in the data, methods and software.

You will find detailed instructions below. Please read these carefully. Should you still have questions, please contact your local [SimaPro partner](#) or the PRé helpdesk by email at [support@pre-sustainability.com](mailto:support@pre-sustainability.com). You may also contact us by phone at +31 33 4504010.

## A summary of the update procedure

The update procedure can be summarised as follows:

1. **Software update:** Update your SimaPro 8.0.5 single-user or multi-user client software to SimaPro 8.1.0. There is no update for the SimaPro database server.
2. **Database update:** Import the update database which includes the new and updated data and methods.

# 2 Updating the SimaPro software

## 2.1 Multi-user versions

We recommend that multi-user updates are done by your network administrator. Please note that:

- All SimaPro 8.0.5 multi-user *clients* have to be updated to SimaPro 8.1.0.
- The SimaPro Database Server software does not need to be updated.

## 2.2 Procedure for updating single-user and multi-user client

The procedure for updating the single-user and multi-user SimaPro client software is as follows:

1. Download the SimaPro installation file SetupSimaPro810.zip from <http://www.pre-sustainability.com/simapro-installation> to each computer that runs the SimaPro single-user or SimaPro multi-user client. The zip file contains the installers for the software and database update.
2. On each computer, unzip SetupSimaPro810.zip and double-click SetupSimaPro810.exe to start the installation. Follow the instructions in the setup wizard. The current SimaPro software will be uninstalled and then replaced with SimaPro 8.1.0. Note that your database(s) will not be uninstalled! You may be asked for your SimaPro registration name and code.
3. Next, proceed with the database update procedure as described below.

# 3 Updating the database

## 3.1 Database update

This chapter describes how to update your database. The update process consists of four parts:

1. Installing the update database that contains the new data.
2. Importing the update database into your SimaPro database(s).
3. Doing an append action to merge synonyms in the substance list.
4. Using the replacement file on the US LCI library



These steps are described in detail in the following sections. In Box 1 and 2 you will find tips for updating multi-user licences and an overview of the default database locations. You have to follow the database update procedure for each SimaPro database that you want to update.

Please note that any *changes* you have made in the library entries or in the original methods supplied in the Methods library will be lost during the update. Processes, product stages or methods that you have *added* (for example by copying) to the libraries that are to be updated will still be there. Contact us for assistance if you wish to keep your changes.

### Box 1. Updating a database in a multi-user environment

In a multi-user environment, updating a database directly on the database server is very slow due to additional network traffic. The update can take several hours, in the worst case up to 15 hours or more. If you have one of the professional multi-user licences (Compact, Analyst or Developer), you can also do the database update locally on a (fast) PC with the SimaPro client installed. This is much quicker.

To copy the database, login as Manager and check under Tools, User Management that no users are logged into the SimaPro database. If so, you can close SimaPro. Locate the database on the server's hard drive (see Box 2 for default locations) and copy the database (a set of 77 numbered \*.NX1 files) to your local hard drive. In the "Open SimaPro Database" window, choose "Local server", browse to the directory you copied the database to. Continue with the update instructions in section 3.2. After updating, copy the database back to its original location on the server.

Owners of an educational Classroom licence do not have "local server" database access, but should request a temporary single-user licence via [support@pre-sustainability.com](mailto:support@pre-sustainability.com) to do the update locally. We will include instructions on how to do this.

### Box 2. Default directories

SimaPro installs updates in the default database directory if no other location is chosen. Which directory is the default depends on the version of Windows your database server is running:

- Windows 7, Windows 8, Windows 10, Windows 2008 server, Windows 2012 server:  
C:\Users\Public\Documents\SimaPro\Database\
- Windows 2003 server: C:\Documents and Settings\All Users\Shared Documents\SimaPro\Database

If you have a multi-user version and cannot find the database in one of the default directories, open the SimaPro database server. In the list of aliases you can see the location(s) of the database directories that are being used.

## 3.2 Installing the update database

In the location where you unzipped the SetupSimaPro810.zip files to, double-click SetupUpdateDatabase810.exe to install the "Update810" database. You have to do this on each computer with SimaPro single user installed. For the multi-user, one installation is sufficient.

The "Update810" database will be installed in the default directory (see Box 2 above). Follow the instructions in the setup wizard. This process will install the update database 8.1.0 on your computer, but it will not yet update the active databases.

*Multi-user version:* since we recommend doing the database update locally, the update database does not have to be

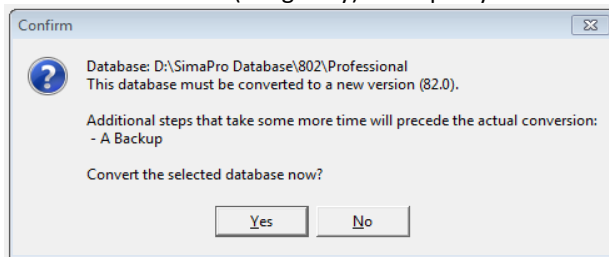
installed in one of the locations (directory aliases) defined in the SimaPro database server. Instead, you can do the update on a local hard drive and then copy your updated database back to the server (see Box 1).

If you notice any older update databases (named Update800, Update801, Update802, Update803 or similar) and you are sure you already imported these updates, you can delete these with Windows Explorer to free up disk space and avoid confusion. To avoid deleting useful databases by accident, please open each database before deleting it to check for any projects that need to be kept.

### 3.3 Importing the update database

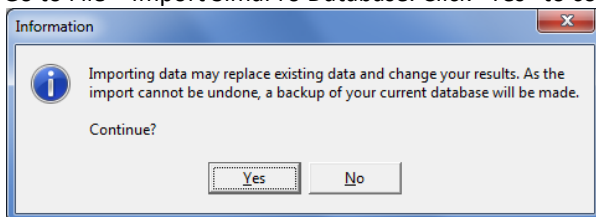
Follow these steps to import the new data:

1. Start SimaPro 8.1.0. If you have a multi-user SimaPro licence, log in as Manager. Make sure no other users are logged in at this moment, because the database will be locked during import. During the update process, users cannot log in to SimaPro.
2. On opening the database a technical conversion will take place which does not alter the content of your database. However, after conversion the database cannot be opened with any previous versions of SimaPro anymore. SimaPro will create a (obligatory) backup of your database. Click Yes to continue.



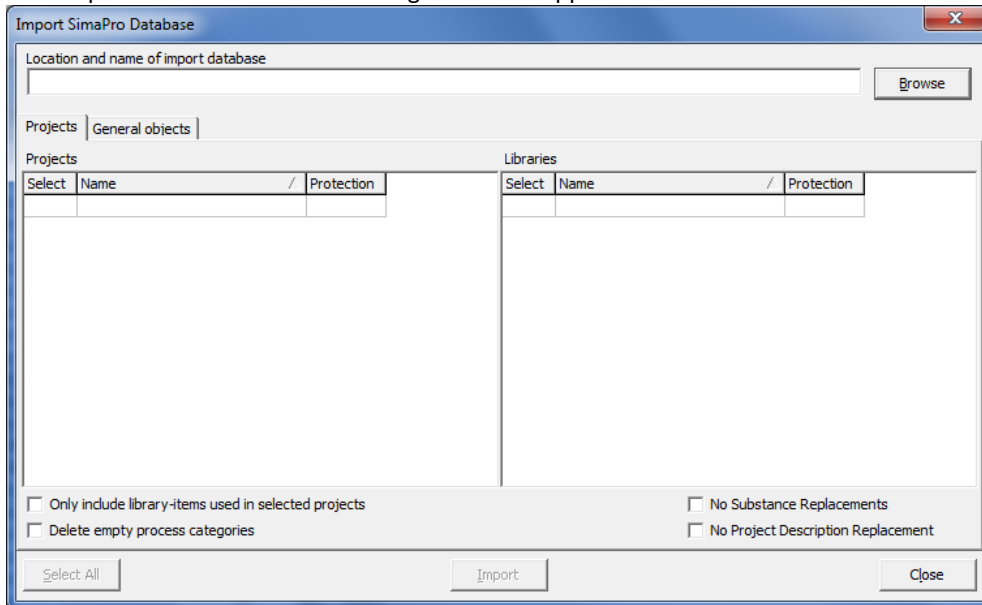
Once the backup and conversion are completed, the database will be opened.

3. Check if the database you want to update is open in SimaPro. The database name is found in the blue bar at the top of the SimaPro window. If the database is not open, go to File > Open SimaPro Database and select the database you want to update (the database you usually work in).
4. Go to File > Import SimaPro Database. Click "Yes" to continue when the message below appears.

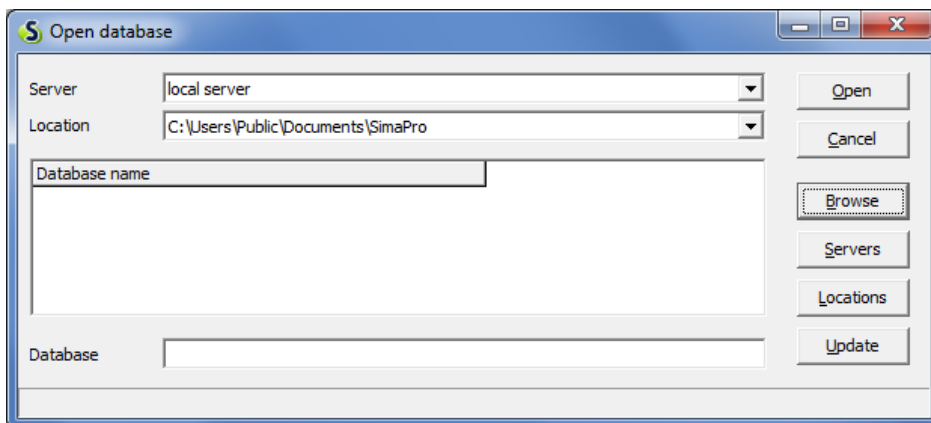




5. The “Import SimaPro Database” dialogue box will appear:



6. Click “Browse”. The “Open database” dialogue box will appear (“local server” is shown in multi-user versions only):

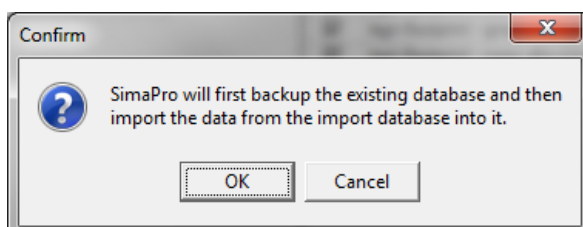


7. The update database (Update810) will appear in the “Open Database” dialogue box. Click “Open”. You will see the libraries that need to be imported.  
If you do not see the “Update810” database, click the “Browse” button in the Open database window. Browse to the directory where you installed the update database, select the “Update810” database (see Box 2 for the default directory) and click “OK”.

8. Click “Select all” at the bottom left of the window. Next, click “Import”.

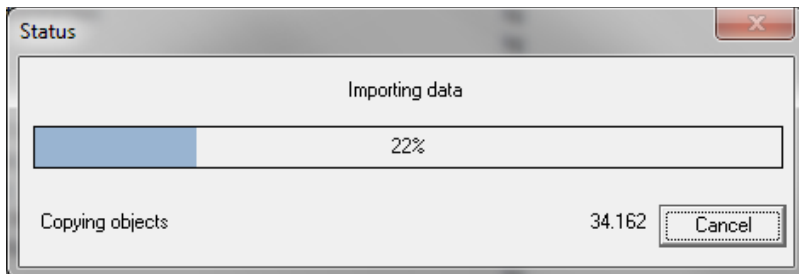
9. The data will be scanned and an overview will be generated of all the data that are added or replaced. We recommend that you save this overview.

10. Click “OK” to start the import process. Before data importing starts, the program will prompt you to make a backup.



After clicking “OK”, select the folder you want the save to backup file in (for example, the default directory; see Box 2). Note: if you click “Cancel”, the update procedure is stopped.

- The data in the update database will now be imported into the existing database.



### Box 3. Import errors

Should SimaPro report any import errors, please save the log file and make screenshots if possible. The overview of issues in the log file may help you to find out what went wrong. For assistance, please send an email to the SimaPro helpdesk at [support@pre-sustainability.com](mailto:support@pre-sustainability.com) and include the log file and any screenshots as attachments.

We appreciate it if you could include the results of the database check, which can be done via File > SimaPro Database Management > Check Database.

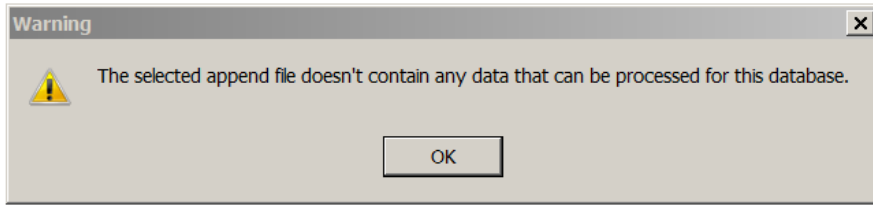
## 3.4 Appending substances

The next step is to do an “append substances” action to convert some old substance names in your database to the latest substance naming convention in SimaPro. If you do not do this, mismatches between life cycle inventory and impact assessment data may occur, leading to incorrect LCA results. The replacements are defined in the append file that is installed with the update database.

Appending merges two synonymous substance names into one. For example, CO<sub>2</sub> needs to be appended to Carbon dioxide, the latter being the name used in the most recent version of SimaPro and in the impact assessment methods. Without appending CO<sub>2</sub> to Carbon dioxide, any use of the substance named CO<sub>2</sub> in processes will not show in the impact assessment results.

- Go to the “Substances” section under “General Data” in the LCA Explorer screen.
- Click “Append”. A new window will open.
- Click “Load” on the right hand side and select the append file: “AppendSubstances810.xlsx”. The append file is found in the same directory as the update database (see Box 2 for default directories).
- Click “Append” on the right hand side of the window. After a final confirmation, the substances will be appended. Depending on the size of your database, this may take some time.
- If you see a warning message as below, there are no substances that need appending in your database. There are no problems, you can continue with the next step.





### 3.5 Using the Replacement file on links to US LCI library

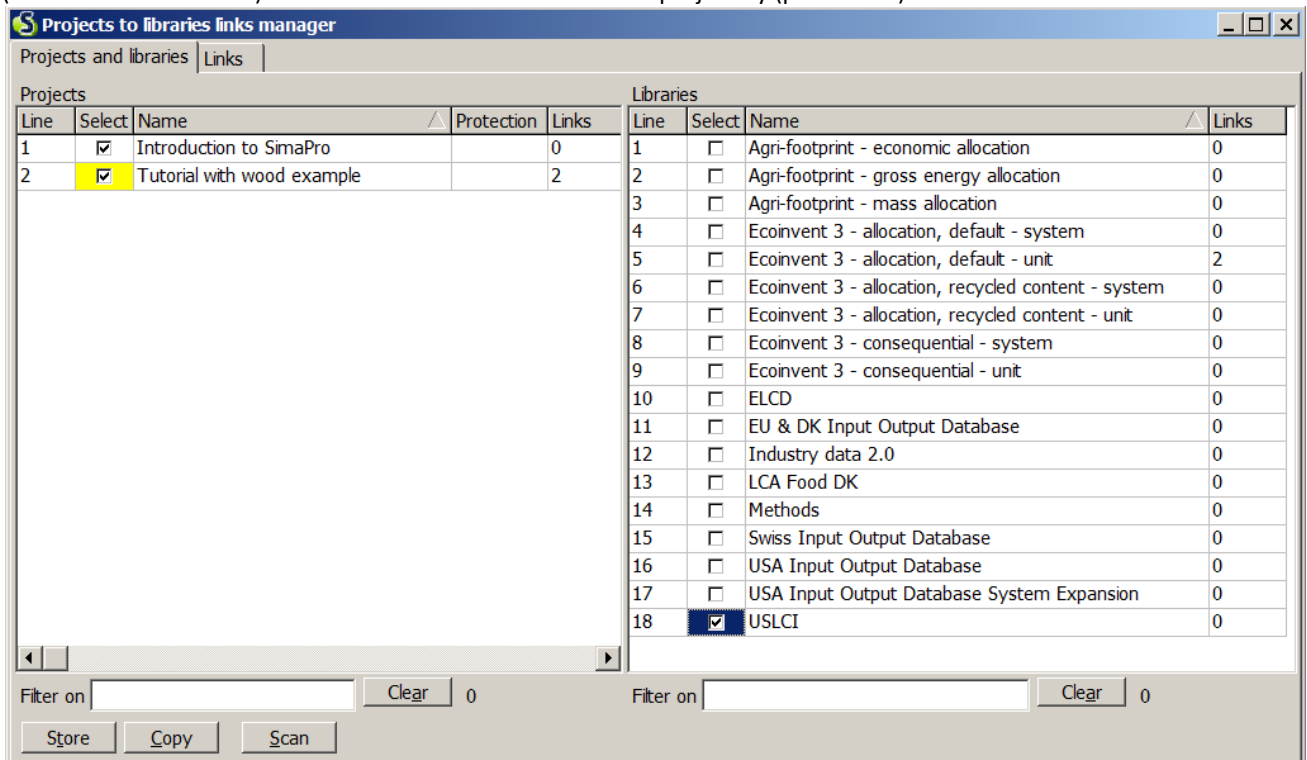
In the update of the US LCI library, a number of changes were made that require your attention if you have used US LCI data in your projects.

With this update it was not possible to replace all processes 1:1 with the updated processes. We have decided to import multiple output processes as such, whereas previously we converted these to multiple single output files (some of which were empty). This means that some processes had to become obsolete and a new multiple output process is created. SimaPro, however, cannot replace 4 processes with the same single process during the import database procedure. To ensure that you link to the new processes and thus get the correct updated results, you need to check for any links that need replacement. PRé created a special replacement file to allow you to change the links in your project to the correct processes automatically. How to use this file is described below.

#### Using the replacement file

Follow the next steps for replacing the links in your project to your present library to the preferred library using one of the replacement file:

1. Open a project in your updated database. This can be any project.
2. Open the "Project to library links manager" window by going to Tools>Project to library Links Manager.
3. Select the project(s) of which you know that they (could) use the US LCI library. Use Ctrl-A to select all projects (Ctrl-Shift-A to deselect). You can also use the filter to select project by (part of the) name.



4. Select the US LCI library.
5. Click on Scan.
6. View the links found by clicking on the Links tab. This is an overview of *all* links to the US LCI library from the selected processes.
7. Click on the "Import replacements" button.
8. Load the replacement file ""Replace US LCI to SimaPro 810.xlsx" which can be found in the database directory (see Box 1).
9. Check the links which are going to be replaced in the column 'Replace name'. Note that it is possible that no replacements are needed.
10. Store your links in order to be able to check afterwards. It is also possible to add new replacement links yourself.
11. Click on the Replace button to replace the links. You will get a confirmation message how many links are replaced to the chosen library.

You have now finished the update procedure. Repeat for any other database you wish to update.